



American Art Collector

Juried Competition
of New Work, 2016



American Art Collector

930 Dwight Way #7

Berkeley, CA 94710

510.644.3534

American Art Collector 2016

Editors: Tom Palmer, Aileen Kim

Juror: Jan Christensen-Heller, Christensen-Heller Gallery

American Art Collector is published each September. The submission deadline is May 1st. Submission details are posted on AmericanArtwork.net

Copyright © 2016 Alcove Books. Printed in Hong Kong. Information is from sources deemed reliable. Publisher assumes no liability for loss caused by errors, omissions, or other causes. Artists reserve all rights to their images.

Front cover, from top left:

HILDA LA OBBINI OMO ELEGUA

Susan Matthews

MOON GARDEN WITH BLUE

Silvia Poloto

ARUBA BEACH AFTER MORNING RAIN

Phil Harris

Back cover, from top left:

CARNIVAL BRACELET

Isabelle Posillico

LIZZY & JUPITER

Charlene Nield

DENISE 6

George Kousoulas

American Art Collector

presents a juried collection of original art and fine craft from across the United States. The works shown are hand-made and one-of-a-kind, or part of a limited series.

Venues listed are merely a sample and subject to change.

Refer to the artist's website for current show schedules and gallery representation.

Some artists also accept direct commissions.

Tom Palmer
Editor





CORAL REEF. Acrylic on wood panel. 24" x 23"

"I strive to capture the inner experience of what is inexplicably captivating to gaze upon a coral reef. Its quality of depth seems to transcend one into the inner depths of the human soul."



BLUE BOTTLE WITH SUNLIGHT #076. Photography. 24" x 16"

"Secret life of blue bottles: sunlight touches glass, sending reflections and light up the wall. My physicist friends mention sine and cosine functions, conic sections, and wave patterns. I think magic. Just a camera and tripod; I focus before the rays disappear."

Venues: 4 Seascapes at SF General Hospital, Seascape at SF PUC building.



GOLDEN BAMBOO IN EVENING SKY. Watercolor. 24" x 36"

"The brush flows to present a direct expression of the mind in action, describing, in spontaneous movement, ideas manifesting a rhythm of balance and harmony to whisper of transcendent worlds beyond. No preliminary sketches mark the threshold. Silk, Paper, Canvas."

Venues: MauiLotus Gallery, Minneapolis, MN; MauiLotus Gallery, Maui, HI.



THOUGHTFUL 10. Oil on canvas. 16" x 20"

"My impressionistic work is about expressing a moment in life. This painting is one of a series."
Venue: Bronx Open Studios, Bronx, NY.



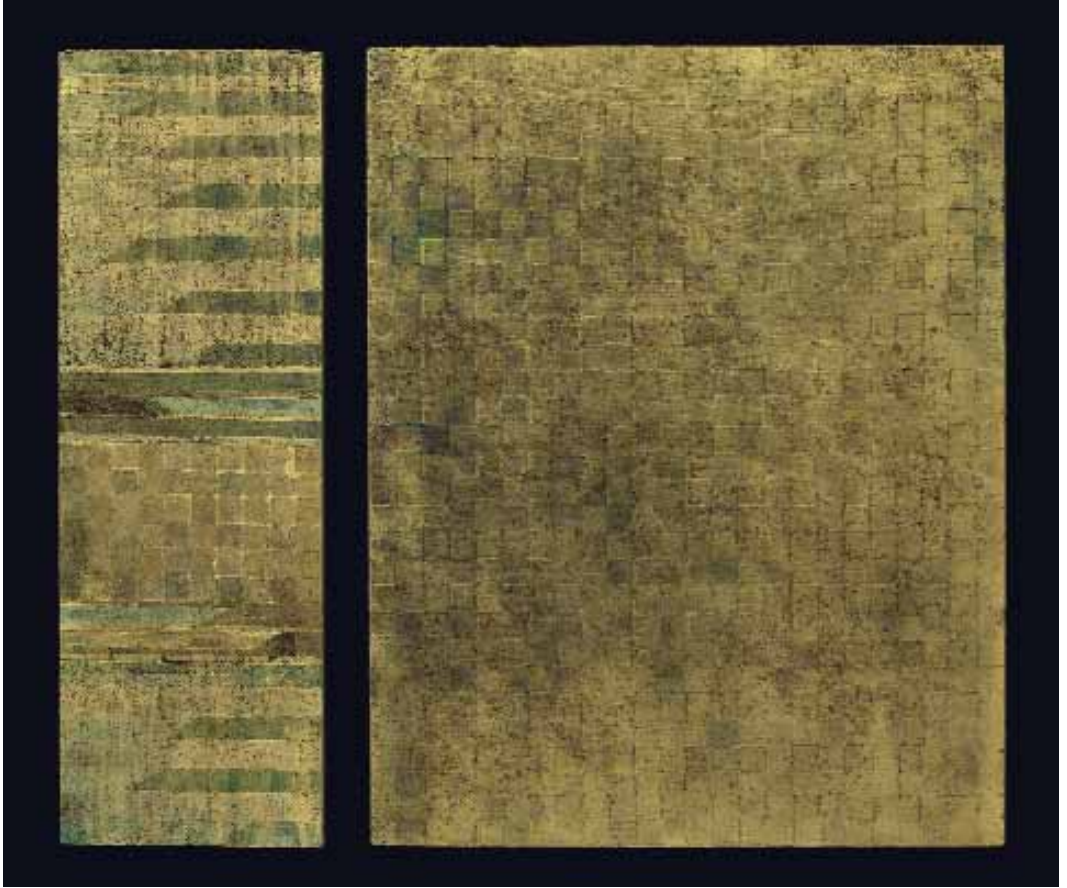
BEAUTY IN THE DEFICIT, WHITE POPPY. Oil. 16" x 12"

"Colors in nature sometimes overwhelm, shapes are complex, movement can mesmerize; all becoming too busy to be appreciated alone. Broken down, restructured by a tiny bit, even blurred or rendered without color, natural wonders become moments of awe-inspiring gratefulness again." Venues: Galerías Corsica, Mexico City, Mexico; Art for the Nations, Denver, CO; Galería Corsica, Punta de Mita, Mexico.



BLOOD DRAW KIT 2: DISSECTION OF A STAR. Mixed media on canvas. 20" x 16"

"Slipping aside the clasp of a small green leather box, I am surprised by the glass vials, brittle black plastic tubes, and sharp cut bulbs for drawing blood. These were my father's tools, a portrait I still have of him."



WOVEN IN (DYPTIC). Acrylic on panel. 30" x 48"

"My current paintings are a reflection of a lifelong interest in the human subjectivity of perception and a pursuit of the true nature of reality. I have been influenced by my philosophical and religious studies in Buddhism. These paintings are a dialogue about the shattering of illusion and the nature of impermanence." Venues: Open Studio, Santa Cruz, CA; 17th Avenue Studios, Santa Cruz, CA; Oswalds, Santa Cruz, CA.



COME SEPTEMBER. Oil on canvas. 24" x 24"

"Capturing the freedom of nature, its beauty, wonder, and spirit, is what stirs my soul. I hope to extend to the viewer a sense of peace and tranquility, hoping for a personal connection between the painting and the individual." Venues: Upstairs Art Gallery, Healdsburg, CA; Towers Gallery, Cloverdale, CA.



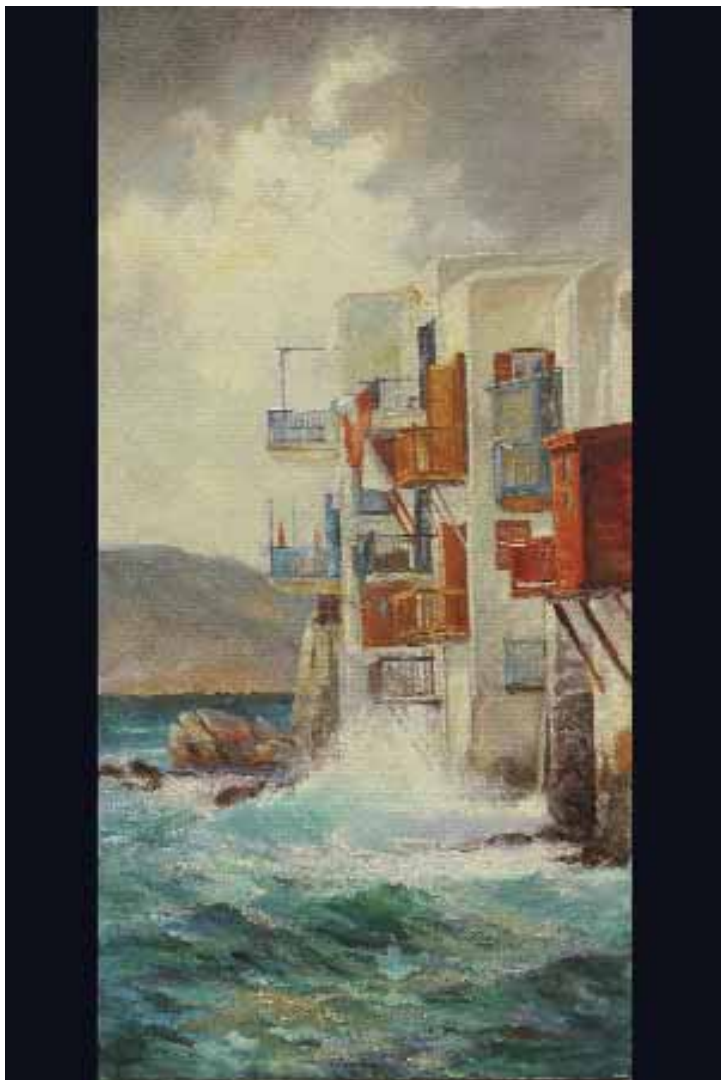
DUNES SUNRISE. Photography. 32" x 38"

"My photographs are the result of the artist's eye combined with the latest technologies in fine archival printing. Most importantly, an awareness of light and design, of finding simplicity in the visual chaos in nature."



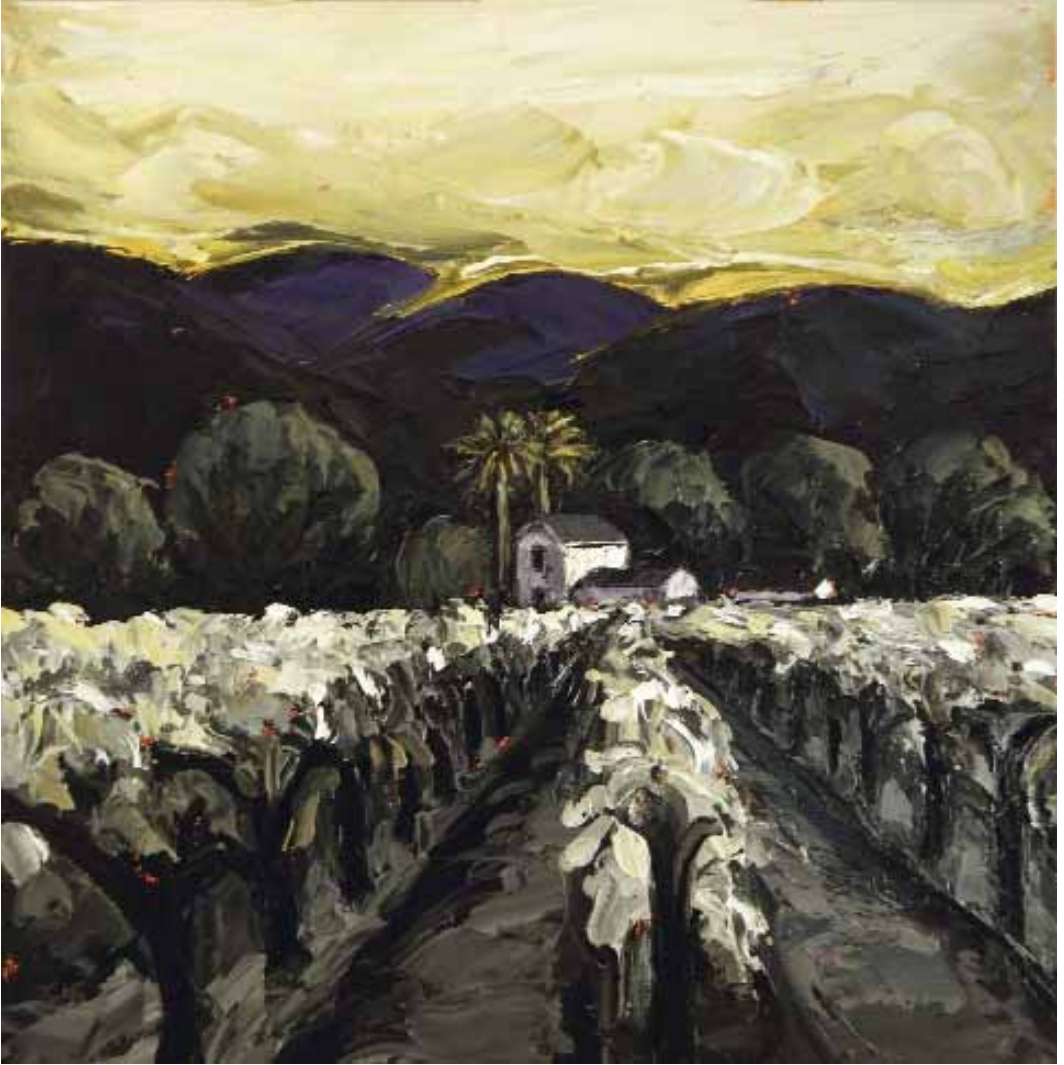
JE T'AIME. Oil on canvas. 40" x 40"

"My paintings feature coincidental, accidental, unexpected connections. Combining unrelated aspects creates surprising analogies. By experimenting with aleatoric processes, I create intense personal moments by means of rules and omissions, acceptance and refusal, luring the viewer into fields of color and marks."



ROOMS WITH A VIEW. Oil. 36" x 24"

"I watched and listened to the forever moving and crashing waves against the old, rocky walls on the island of Mykonos, Greece. Using spontaneous loose brushwork and vivid colors, my aim was to be interpretive and imaginative."



BENNETT LANE VIEW 7. Oil on panel. 12" x 12"

"The joy of discovering new places and a desire to intimately understand and connect with the landscapes that inspire me is a lifelong passion. My landscapes explore the diversity and drama of the land, its geology, and the sculptural effects of light, water, and weather." Venues: Casa Design, Calistoga, CA; Boho Gallery, Freestone, CO; Skol Studio Gallery, Ouray, CO.



IN THE WATER. Inks, ink wash, graphite, acrylic, rice paper. 48" x 58"

"Each work is an experiment. By allowing intuition to guide my hand and use of material across the page, the visions hidden silently in my imagination merge with my sense of the elemental world around me and become visible." Venue: Noonan Building Pier 70, San Francisco, CA.



MIDNIGHT JAM. Acrylic. 12" x 9"

"Music gives wings to the imagination, providing inspiration for my work. Whether it is representational or abstract, these underlying notes are a continuing theme in my paintings, which drives my creative process." Venues: Somerville Open Studios; Vernon Street Studios, Somerville, MA.



SERENDIPITY. Watercolor. 22" x 30"

"I am drawn to: trees, mist, waters (still, flowing and reflective) and flowers. I love the endless possibilities of combining the textures, colors, compositions, spaces (positive and negative) and designs into a new work and exploring the mysteries and simplicities they represent." Venues: Kaviar Forge Gallery, Louisville, KY; Artisan Center, Berea, KY; Damsely Gallery, Midway, KY.



SHINING. Mixed media. 36" x 36"

"Layering color and glazes according to structure but without image or idea is for me like an archaeological dig of discovery. I feel I go deeper with each layer and what can emerge is then revealed. The luminosity that results and the sense of seeing behind appearance in multiple dimensions intrigues me and inspires me." Venue: Foundry Gallery, Washington, DC.



PORTRAIT OF A MARRIAGE. Oil on linen. 24" x 18"

"Inspired by the portraiture tradition, but working in the still life genre, I use objects or belongings, rather than faces, to explore the human experience. I call these paintings 'portraits in absentia,' and I seek to illuminate the lives that have touched these objects." Venue: Gallerie Citi, Burlingame, CA.



WINDOW OF THE NIGHT (DETAIL). Cast bronze. 35" x 25" x 7"

"I abstract the figure because it has such universal identification, profound complexity, and mystery. The human body conveys a multitude of implied messages in a simple gesture. My scale ranges from small to life-size, unique casts to edition copies of twelve."

Venue: Ekasake Sculpture Garden & Gallery.



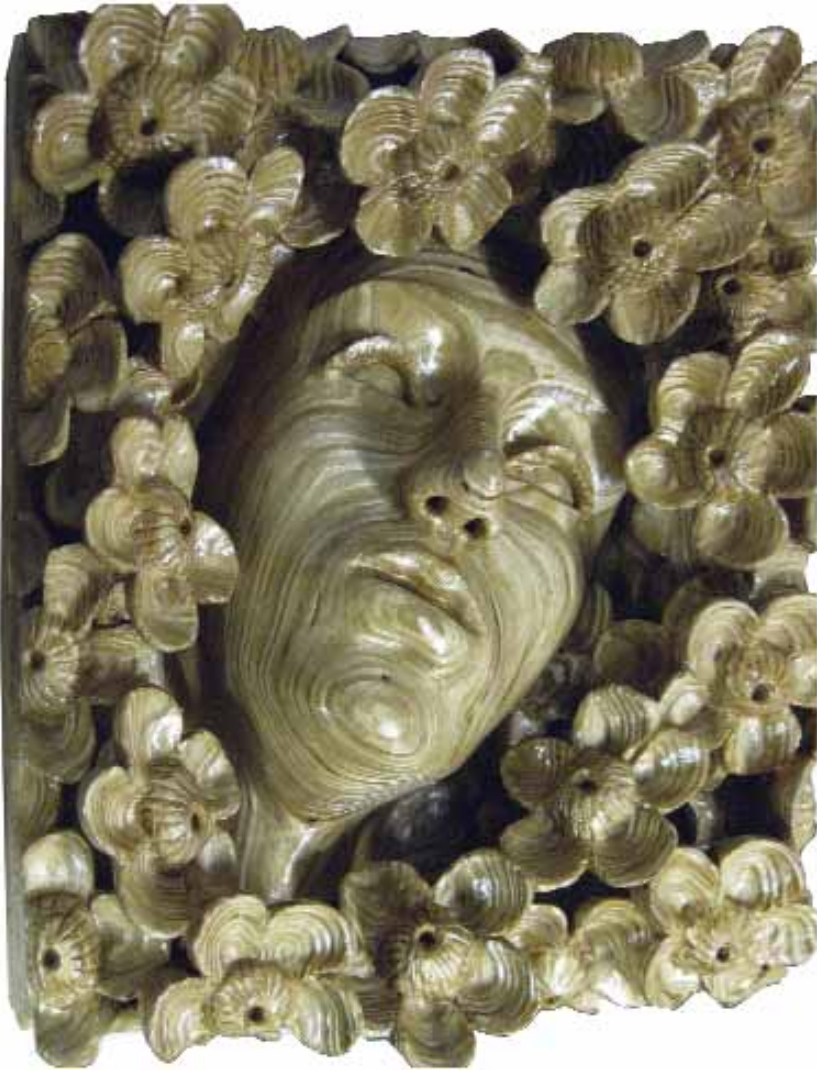
WINGED OWL. Acrylic on canvas. 30" x 24"

"Beginning with an inspired context, an insight, I design the basic composition, then allow the painting to unfold itself through me. When wrestling with its complexities is sorted through, the painting is complete: the conduit for its own essence." Venues: Trumpet Gallery, Peterborough, NH; Studios Eleven Gallery, Oakland, CA.



CONCORD HOPE. French Percheron. Limited edition. Bronze. 22" x 26" x 9.5"

"My inspirations are derived from the fond memories of my life with God's leading. I aspire to create the life around me to exact detail, beauty and realism. The eyes and expression of each tells the story of each bronze." Venues: Don Beck's Bronze Gallery, Baker City, OR.



FLOWER POWER. Varnish on hand-carved birch plywood. 15" x 17" x 4.25"

"I love the way carved plywood creates such interesting cross-contour lines that make such an optical feast for your eyes!" Venues: Foundation Gallery & Liveroom, Kensington, MD;
Joe's Record Paradise, Silver Spring, MD.



UNTITLED. Oil on canvas. 38" x 43"

"My present work is a combination of figurative imagery with poetic sensitivity. It is often the subliminal mind that creates the initial medley of shapes and spaces, and the artist who makes the choice of exaggerating or diminishing various areas, figures, and characters. The purpose of my work is imagery that conveys a consciousness that implores us to seek out the details and subtleties of nature, and explore our relationship with it."



HOMAGE TO A CIRCLE. Oil on linen. 47" x 48"

"Circles in combination with figures have long been part of my painting vocabulary. To me a circle represents endlessness. There is no beginning, no middle and no end in a circle. This painting is a celebration of that form."



SACRED ESSENCE. Multimedia collage. 16" x 20"

"Primarily a painter, I have moved into multimedia collage. I engage in the process of the creation of transparency and opacity arriving at what meets the surface; the mystery that motivates the artist within; what is shown; what is hidden." Venues: East Bay Open Studios, Oakland, CA; Mythos Gallery, Berkeley, CA; Redux Gallery, Alameda, CA.



BEAVER DAM. Oil on canvas. 25" x 26"

"All the imaginary landscapes begin as abstracts of flowing oil paint. As I studied these beginning abstracts, the flow of paint seemed to create the fluid forms found in nature.

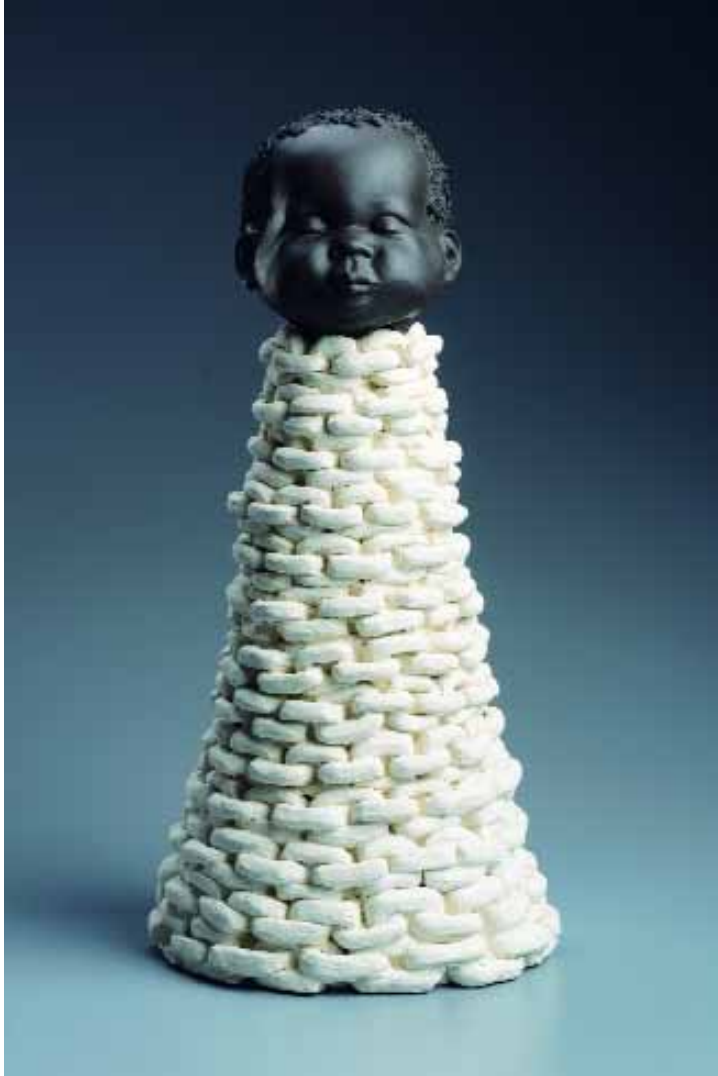
I paint the pictures that I see in the paint." Venues: Kings' Gallery, San Francisco, CA;
Open Studios, San Francisco, CA.



ST. GEORGE ISLAND. Oil on canvas. 24" x 36"

"I search for beauty in the natural world and in everyday things. I work primarily in oil, from life and from my photographs. I love to see how light transforms objects and places, and to capture that transformation in paint. Landscape is my primary subject, because of its universal appeal. I like having an excuse to spend time outdoors in beautiful places around the world."

Venues: Artemis Gallery, Mary Woerner Fine Arts, Signature Gallery.



START 'EM EARLY. Clay. 17.5" x 8" x 8"

"My art bridges the gap between personal trauma and political oppression. My hope is that a person who is suffering will see this work and know they are not alone, and that even in that deep place of pain, art can save their life."



FLORAL NEXUS. Acrylic paint, medium on wood panels. 60" x 48"

"Floral Nexus is a series about flowers and plants and the ways they connect us with memories while experiencing the present at its most sensuous. The 30" x 24" paintings flow together visually and are designed for installation in groupings." Venues: Colo Colo Gallery, New Bedford, MA; Gallery 65, New Bedford, MA; 88 Hatch Street Studios, New Bedford, MA.



UNWRITTEN WORDS. Photo collage. 20" x 16"

"For this image I have painted, sanded, and scratched many surface layers onto a wood panel. The final application is a transfer made from a photo I took with my iPhone of a pool of water. I am always amazed at how photos can transform the most simple images into more interesting and complicated ones." Venues: Arts Council Napa Valley, Napa, CA; Agora Gallery, New York, NY.



REHEARSAL 3. Oil on canvas. 30" x 30"

"I am a self-taught, San Francisco-based artist. I started out as a ballet dancer, and that experience has brought line and movement to my art. My work is inspired by a love of paint, color, and humanity. I choose subject matter that mirrors my own emotional encounter with the world, and believe that my most successful work reflects archetypal images common to life experience."



RESORT DEL SOL. Pencil on giclée of watercolor. 12" x 12"

"Color is my passion! I engage in and teach the artistic process as a means of self-discovery and self-development. Color dynamic is the principle theme. I lay down multiple washes, search for forms in the composition, and experiment with whimsical patterns inspired by nature and architecture." Venues: Firehouse Art Collective; Gilman Studios, Berkeley, CA.



QUIET OBOE & PAINTING (DETAIL). Wrapped fiber over hollow core, oil on canvas. 70" x 60" x 5"

"We combine, create, collaborate, and laugh in color. The canvases create an environment for the fiber, and the fiber accents the canvas. Adjacent or overlapping, the harmony of the hues and textures add more than a third dimension to the art."

Venue: Earthenworks Gallery, La Conner, WA.



RECKONING. Encaustic, mixed media on wood. 14" x 14"

"Shredded paper receipts incompletely reveal a private life recorded as public transactions, a public reckoning, certainly, but also a private one. The record traces friends, travel, home, loved ones, indulgences. The layers of wax preserve the record and make its contemporary content seem timeless." Venues: The Gallery at Finer Frames, Eagle, ID; Exhibition at Boise State Public Radio Office, Boise, ID.



RADIAL SPOKING. Mixed media. 16" x 16" x 4"

"The goal of my work is to elevate man-made and recycled materials to a level that suggests that there is beauty in life after death, and to open the eyes of others to consider their role in the preservation of our earth." Venues: Montpelier Arts Center, Laurel, MD; Brentwood Arts Exchange, Brentwood, MD; McLean Project for the Arts, McLean, VA.



FOREST AWAKENINGS. Stoneware clay, bronze glaze. 12" x 8" x 8"

"Clay as art is my goal and inspiration. My love for drawing, clay, and sculpture lives in my work. From mud to life, to tell a story, to live beyond oneself, a jar is something to behold."

Venues: Sabino Stoneware Pottery, Tucson, AZ; Blue Dome Gallery, Silver City, NM;
Scargo Stoneware Pottery, Dennis, MA.



SPIRIT FORM VAR.3. Austin Station, Kowloon, Hong Kong. Bronze. 12' x 5' x 4'

"My work is an exploration—emotional, spiritual and physical—of what is unseen in nature.

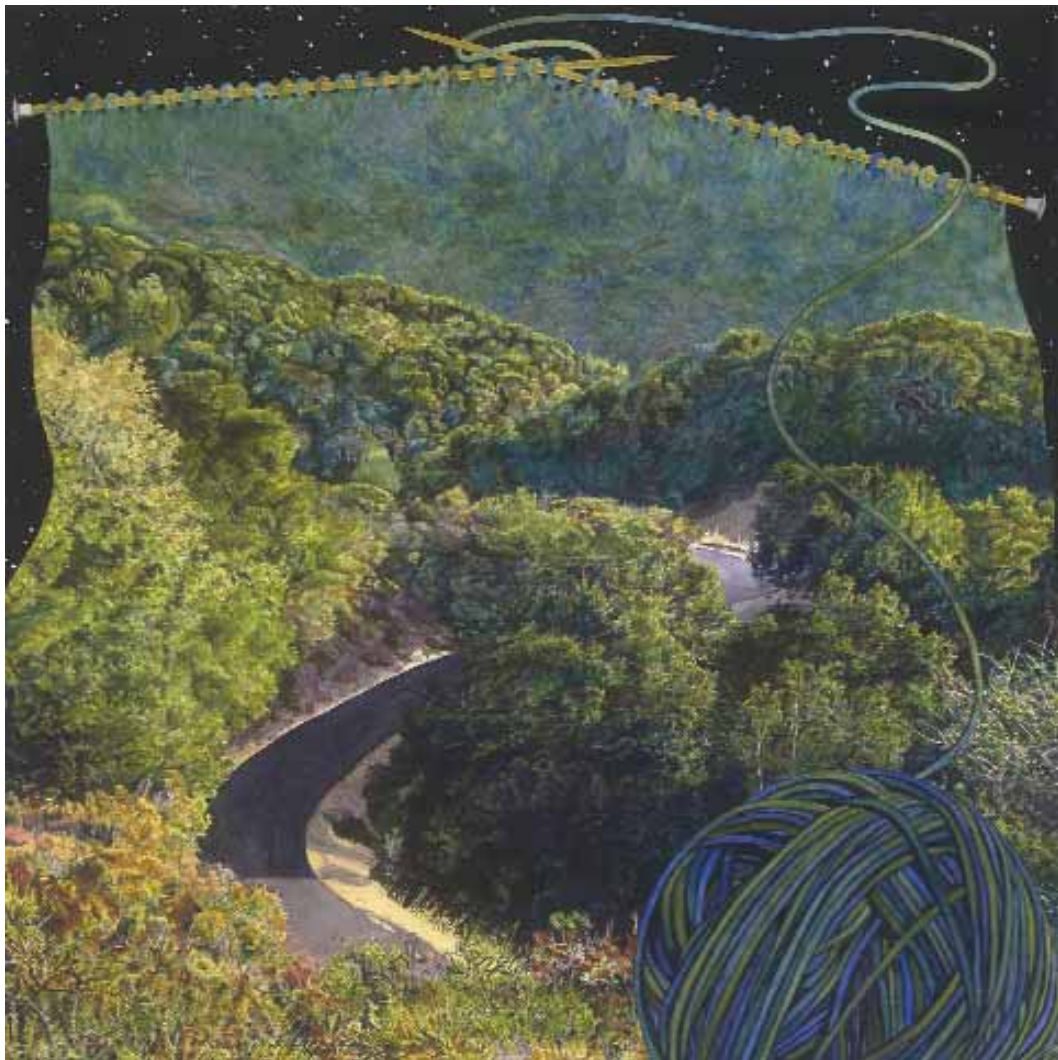
I seek to create a tangible expression of the intangible. Daily connection with nature provides me with a foundation to sculpturally express the dynamic tension between life's ever-evolving processes of growth and decay that underlie the structure of the physical world."

Venues: Serenade Towers, Hong Kong; District at Green Valley Resort, Henderson, NV.



CHANGING TIMES. Acrylic, mixed media on canvas. 35" x 35"

"I have been experimenting with my paintings this year and the piece I have submitted is an example of new techniques. I am painting more loosely, leaving my work less finished and more raw. This process is exciting." Venues: Space Gallery, Denver, CO; Sopa Fine Arts, Kelowna, BC, Canada; William and Joseph Gallery, Santa Fe, NM.



KNITTING NEEDLES. Watercolor. 40" x 40"

"*Knitting Needles* evolved from an 11" x 11" daily painting of landscapes with an object. Knitting a landscape so intrigued me that I knit the scene as a vest. I painted this 40" x 40" version as part of my *Large Watercolor* series." Venues: Rkl Gallery, Menlo Park, CA; CattleTrack Gallery, Scottsdale, AZ; Skymuseum, Palo Alto, CA.



CALIFORNIA SPRING. Oil on linen. 18" x 24"

"I try to express my artistic passion through mood, color, atmosphere and texture with oil paint. It is the emotional connection and need to express it through my art that attract me to certain subjects. I paint landscapes, still life, and figurative subjects." Venues: Venture Gallery, Monterey, CA; Art Of Santa Cruz Gallery, Capitola, CA; 17th Ave. Studios, Santa Cruz, CA.



SPRING THAW. Acrylic on canvas. 36" x 36"

"I have been painting since 1973 and have been working in acrylic for twenty of those years on paper, panel, or canvas using glazes and poured pigment. The inspiration for this piece stems from the two years I lived in Colorado." Venues: Eaton Fine Art, Austin, TX; Little Tree Studios, Avondale Estates, GA.



SNOW DAY. Oil on canvas. 24" x 18"

"I try to understand the dog I am painting and make it a serious portrait of an individual.

Today our dogs are part of the family. That is what I work to represent. I am fascinated by dogs as portrayed by many great artists of the past, especially Velasquez. Usually these dogs are a small detail of the painting but for me they are the main focus." Venue: The Gallery at Gorse Mill Studios, Needham, MA.



STILL LIFE AFTER PICASSO. Watercolor. 30" x 22"

"What is in my still life is my life. My paintings or drawings in the background, I weave or relate, with the still life. I am working to abstract it and make it simple in the next one. There is always a next painting that will be different." Venues: Highlight Gallery, Mendocino, CA; Fairmont Gallery, Sonoma, CA.



SPRING IN THE DISTANCE. Fused glass. 14" x 12" x .75"

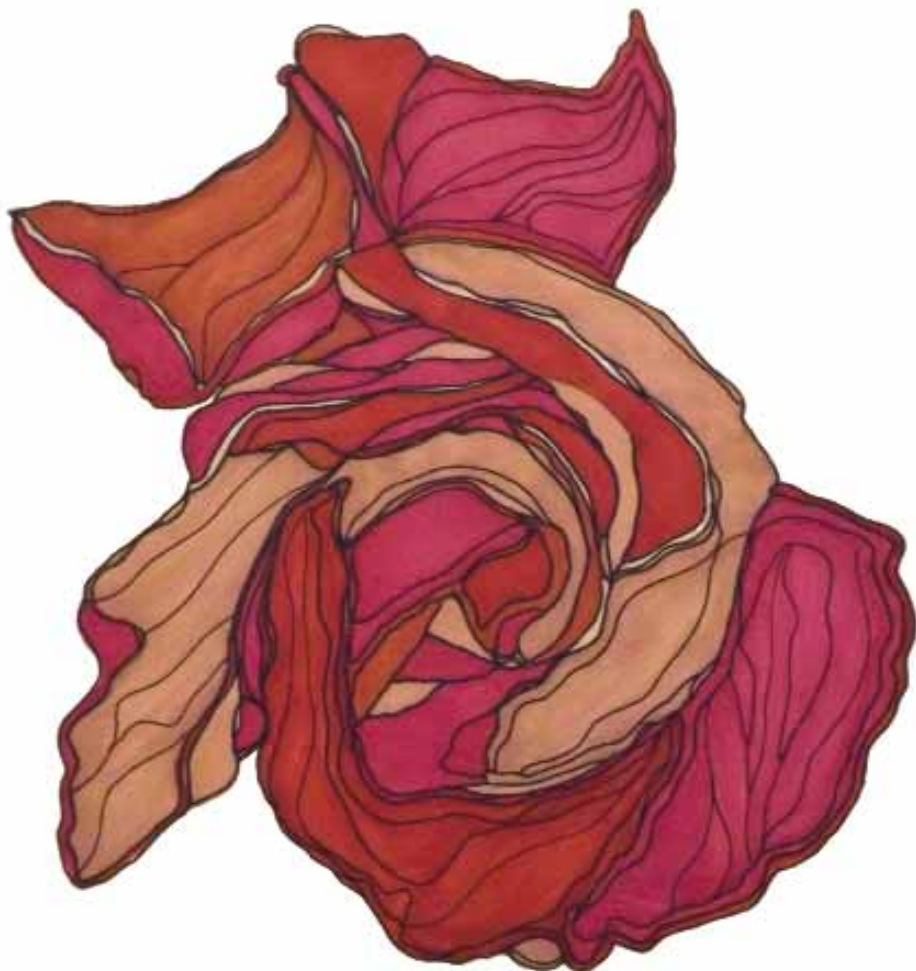
"I was drawn to fusing glass because of the depth and complexity that are possible. I transform layers of glass into translucent images of amazing emotional power. My work reflects my passion for nature, color, and texture." Venues: New Masters Gallery, Carmel CA; Dragonfire Gallery, Cannon Beach, OR; Earthwork Gallery, Newport and Yachats, OR.



LIVING IN DREAMS. Manipulated photo. 20" x 16"

"Searching for the secrets of life and the universe, I see ascendance in most of what I observe.

There are difficulties in this world, but I believe art is one way of showing how to use these difficulties to create that which we would rather have." Venues: Cafe Arrivederci, San Rafael, CA; Rakkasah West, Richmond, CA; Redwood Empire Chinese Assoc., Santa Rosa, CA.



ROSE. Drawing. 16" x 15"

"Drawing is a way to celebrate the intricacies and beauties of whatever is in the vicinity. I look for the surprise and delight inherent in the common details of life, to draw onto paper those small patterns that permeate everything." Venues: Buttonwood Artspace, Kansas City, MO; Carondelet Center, Saint Paul, MN, Democracy Center, Boston, MA.



JEREMIAH 29:11. Mixed media. 36" x 24"

“‘For I know the plans I have for you,’ declares the Lord, ‘plans to prosper you and not to harm you, plans to give you hope and a future.’”



LET IT SNOW. Watercolor. 20" x 24"

"My philosophy on art and life...family, friends, animals, and nature define my inspiration. Dancing and music define my painting process. My mediums include porcelain, watercolor, oil, and encaustics." Venue: 4th Street Fine Art, Berkeley, CA.



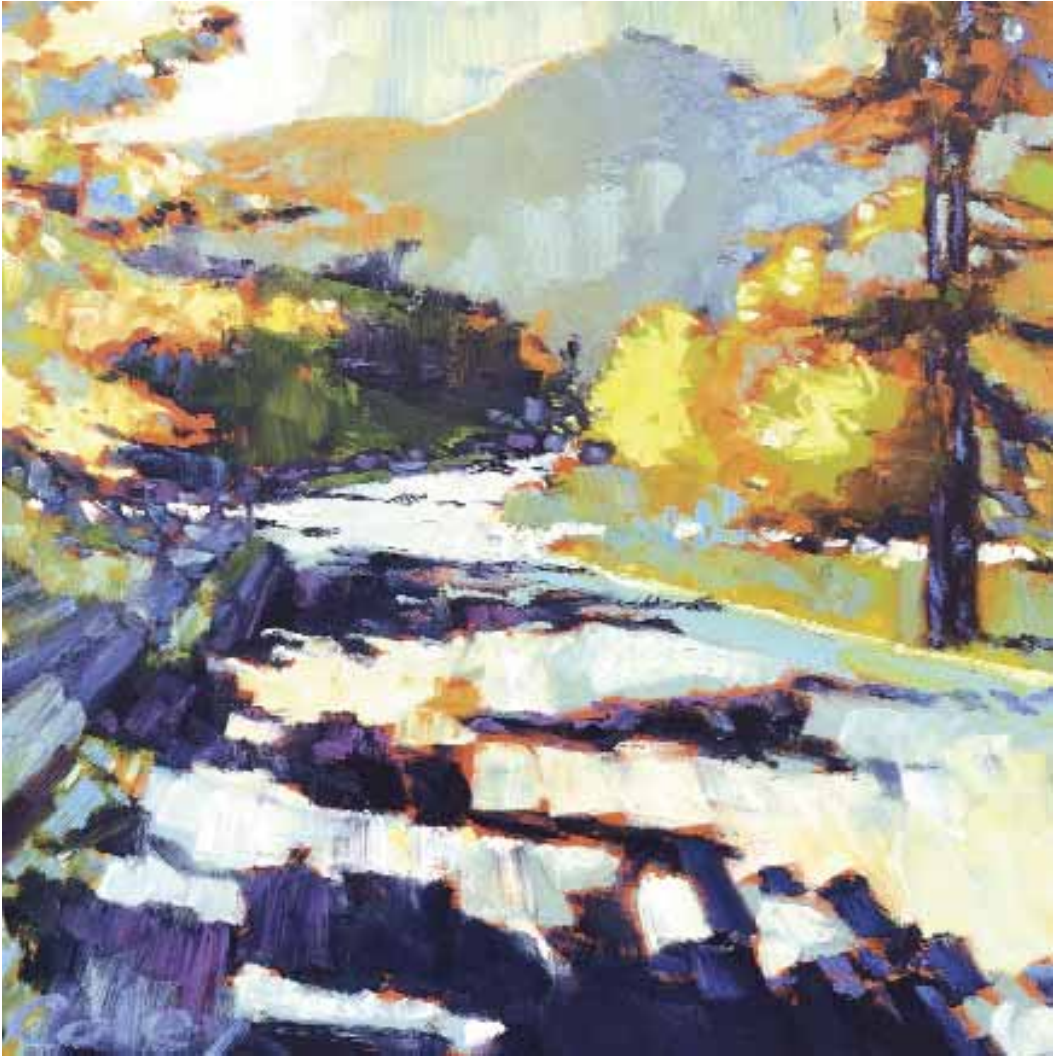
A LITTLE BIT OF EVERYTHING. Oil stick on canvas. 48" x 36"

"I create joyful landscapes that are complex in color and whimsical in form. My work explores sunny days, churning storms, and quiet nights. I paint the swirling, rocky, blooming, curvy, growing, living carpet that textures and colors our amazing earth." Venues: Art Source Gallery, Boise, ID; ArtiZen Gallery, McCall, ID.



GOOD FOUNDATION. Watercolor. 16" x 12"

"In the series entitled *Emotional Color*, I move from something that needs resolving to something beautiful and releasing. In a flowing conversation with watercolor, I tap into the subconscious, developing texture, pattern, gradients, and luminous, glowing color in non-objective and abstract forms that often evoke nature." Venue: Jennifer Perlmutter Gallery, Lafayette, CA.



MILLER AVE & MOUNT TAM. Oil on canvas. 36" x 36"

"My painting has its roots in the fanatical ethos of a small school in southern France which made Cézanne its figurehead. Twenty years later, I still paint on location, finding myself in relation to a place although I would say it is much more of an adventure. I like painting spontaneously, making mistakes, and learning, being open to a place." Venues: SFMOMA Artists Gallery, San Francisco, CA; Robert Allen Fine Art, Sausalito, CA.



DISEQUILIBRIUM # 1, 2, 3. Oil on paper. 84" x 20" each

"I respond to the use of repetitive patterns in Native American art and African textiles. Diamonds and triangles are part of a universal language that can be understood without words and speaks across time and distance." Venues: The Newark Museum, Newark, NJ; Lowell House, Harvard, Cambridge, MA; University of CA, Santa Cruz, CA.



THE JUNIPER TREE, MY MOTHER KILLED ME. Charcoal. 44" x 30"

"Illustrating fairytales in charcoal and pastel, I am challenged to make something intriguing and meaningful from well-recognized sources. These vignettes of conflict, misunderstanding, and relationships gone awry have intensity, humor, and a serious undertone."



POSSESSION. Watercolor. 32" x 42"

"My favorite work is impulsive. In this case, the subject matter represents a tribute to my sister's strength. I love working with watercolor more than oil. Water media dries quickly and I ruin fewer clothes. Portraits are my passion, yet I've found most people find fault with their faces." Venues: JoanEve Classics & Collectibles, Ellicott City, MD; Great Finds & Designs, Timonium, MD; Inner Bridge Wellness, Lutherville, MD.



STILL LIFE WITH TOYS AND SNOOPA. Acrylic on canvas. 30" x 40"

"I want to create real life on the canvas. I paint directly with a brush in natural light. I grew up in New York, received a BFA from University of Colorado, and now work in San Francisco."

Venue: Studio Gallery, San Francisco, CA.



LILAC TIME. Oil on canvas. 24" x 36"

"I begin my paintings outside in nature. There, I am influenced by all the elements. Being at the site allows me to deeply experience it. My subjects are thoughtfully chosen to reflect a certain feeling. The paintings are composed to draw the viewer deeply in, so they may also experience the natural world. I am interested in the relationship between nature and humans."

Venues: Shipyard Artists Studios, San Francisco, CA; Mendocino Art Center Gallery.



ARCHED WINDOW WITH LEAVES. Stained glass. 42" x 84"

"Stained glass is often referred to as the art of painting with light. So let the sun shine through."
Venue: Shoreline Arts Trail



DALI / KANDINSKY ART HISTORY INSPIRED OBELISK. Mixed media graphics. 12" x 8" x 4"

"This piece shows a multi-dimensional graphic arts technique applied to brass and fiberglass. The process consists of computer graphics, inlaid strips of glitter, prism, and marble paper, and a unique photo image transfer technique. This allows for a wide range of exciting graphic designs." Venues: Artemis Gallery, Richmond, VA; Lincoln Center Festival of Arts, New York, NY; ACC Shows, Baltimore, MD and Atlanta, GA.



INTO THE HILLS. Oil on canvas panel. 16" x 20"

"The spirit of our open lands is something I deeply cherish, and I'm forever inspired to capture it on canvas. As a Colorist plein air oil painter, I pay close attention to the warms and cools, working quickly and with rich colors, to explore the visual language of light and atmosphere."

Venues: Sage Gallery, Novato, CA; MarinScapes, Larkspur, CA; Marin Open Studios.



WILD FOREST. Wire & wood armature, resin, celluclay, paint. 29" x 27" x 29"

"I think of the tree sculptures as an intricate web where one gets entangled in the roots and branches. They contain fleeting memories of real and imaginary journeys. Each emphasizes a beauty and mystery of nature yet are filled with mythic symbols. Collectively they evince a personal language—a dialogue between humanity and nature." Venues: Grounds for Sculpture, Kennedy Recreation Center, Taylor Multi-Service Center.



SKY LARIAT. Acrylic. 72" x 48"

"I like energy; color that is woven together with depth and dimension and results in a vibrant, dynamic work of art." Venues: A Gallery, Palm Desert, CA; Lanning Gallery, Sedona, AZ; Rare Gallery, Jackson Hole, WY.



INDIGO BUNTING. Mixed media. 16" x 12" x 3"

"*Indigo Bunting* is a combination of watercolor and my handmade paper. It is framed with recycled wood. My inspiration comes from the beauty of nature. I work with architectural and recycled found objects in my collages and paintings." Venues: Albrecht Kemper Museum of Art, St. Joseph, MO; Plattsburg Artist Coalition Annual Art Show.



CITY STREETS. Acrylic on wood. 18" x 24"

"*City Streets* is part of a larger body of work focusing on Cleveland, Ohio. Select works from the *Cleveland Collection* were featured at the Ohio Governor's Residence in the spring of 2015."
Venue: JoAnn DePolo Studios & Gallery, North Olmsted, OH.



WINE AND ROSES. Acrylic, mixed media. 18" x 24"

"Influenced by the paintings of French and American Impressionists, I like to think my art work captures the essence of inspiration and atmosphere. When creating art I often focus on shapes and abstraction through a gestural approach, creating paintings with an energetic motion, achieving a careful balance between controlled structure, spontaneity, and color compositions."

Venues: Main St. Gallery, Annapolis, MD; Weatherburn Gallery, Naples, FL.



CANYONLANDS. Acrylic on canvas. 48" x 48"

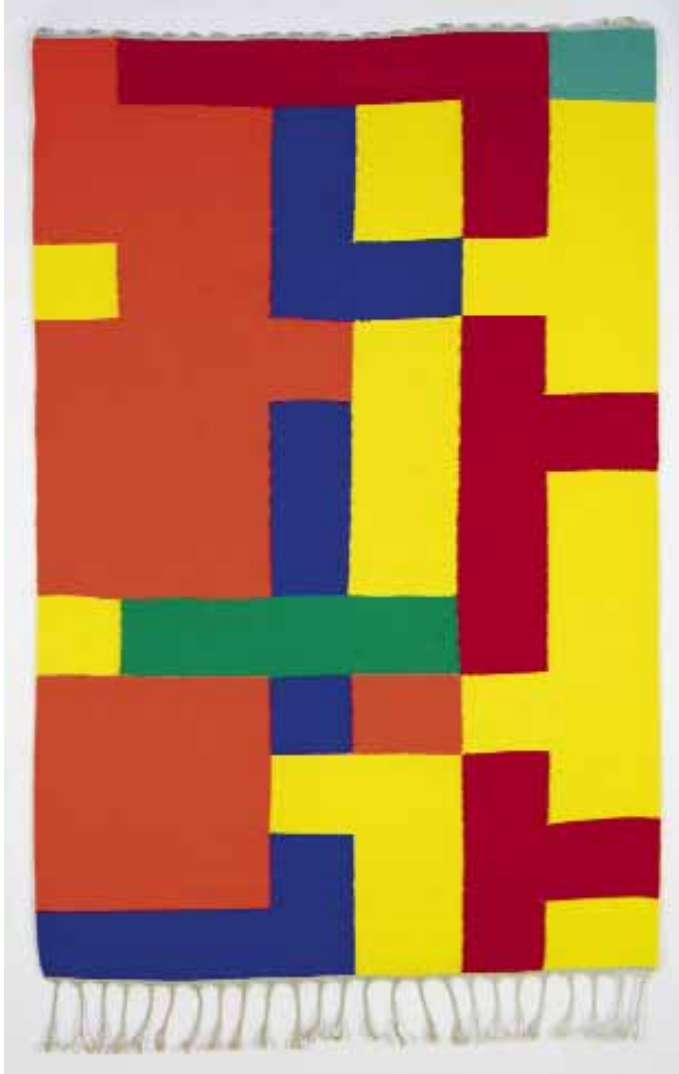
"I have moved to the desert, where red rocks, canyons, and cliffs surround me. It is an inspiring landscape, full of texture, color, and light. Beauty abounds." Venues: A Gallery, Salt Lake City, UT; Mishin Fine Arts, San Francisco, CA; Gallery Russia, Scottsdale, AZ.



CHANGE TO SPRING. Acrylic on canvas. 48" x 36"

"I paint abstract, original acrylic and mixed media seascape, cityscape, and equestrian paintings on canvas and watercolor paper inspired by the San Francisco Bay Area."

Venues: High Point Furniture Market, High Point, NC; Collector Art Shop, Berkeley, CA;
Private Studio and Gallery, Petaluma, CA.



TAPESTRY 125 - HUNTER VARIATIONS. Weaving. 68" x 46"

"Neon Hunter Orange continues to be the muse for this new series, *Hunter Variations*. Proportion, composition, balance, are all important. But the central element to the weavings is color. Visual music, color is king." Photo by Dave Clough Photography.

Venue: Caldbeck Gallery, Rockwell, ME.



NIGHTSKY - ORANGE. Cut steel powder coated. 46" x 47" x 36"

"I read that space was curved. What does that mean, in an infinite void? I started connecting the dots, whether they be stars or synapses. The result is the juxtaposition of soft concepts with hard steel, painted with automotive brightness, candyflake orange sparkling in the sun. The piece is an intersection of two nightskies, bent planes colliding in space."

Venues: Harvest Inn Gardens, Ford Street Studios #35, DCP Gallery.



HIDDEN EYES. Acrylic on canvas. 30" x 30"

"Color represents my feelings and moods at the moment. My art is a manifestation in color and form of primal emotions, fears, and aspirations over which I have no conscious control, and even, in many cases, no conscious awareness."



ORBS + ORBITS. Urban plaster. 30" x 60"

"This is one of my newest in my latest series: *High Organic Urban Plaster*. I am exploring the depths of new, chunkier textures and earthy, grittier colors...infusing geometry with organic freedom." Venues: Orlando City Hall, Public Works Collection; Art Basel Miami; Art Park, Rhodes, Greece.



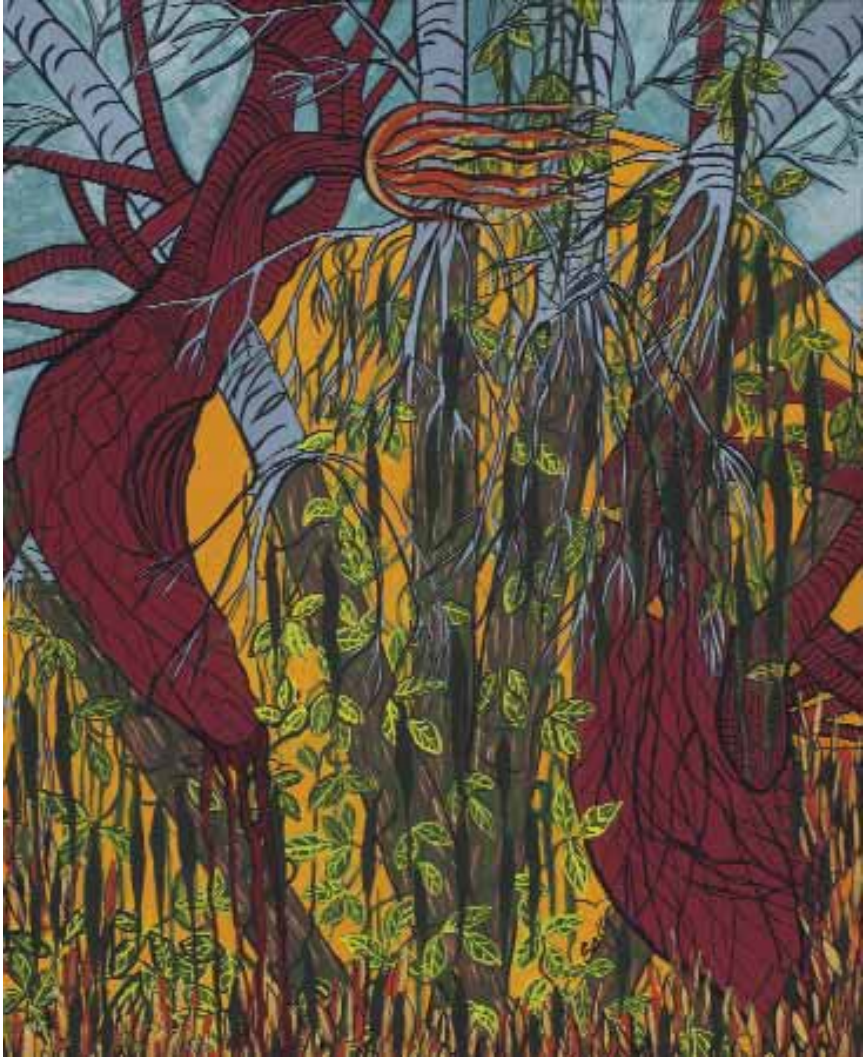
OVER UNDERWORLD. Acrylic on canvas. 48" x 36"

"My narrative abstractions emerge from Greek mythology, poetry, and prehistoric art. I explore archaic worlds to meld ancient metaphor with contemporary vision." Venues: Saltworkstudio, Santa Rosa, CA; Sonoma County Art Trails Open Studios.



APPLE ORCHARD FALLS. Acrylic batik on rice paper. 26" x 22"

"One of the more exciting aspects of creating art to me is experimenting with new media and combining that with more familiar approaches. I am currently working in several media including mixed-media collage, monotypes, oil, oil and cold wax, and acrylic batik." Venues: Art on Kirk, Roanoke, VA; The Bower Center, Bedford, VA.



BEAN TREES. Gouache on paper. 21" x 17"

"My paintings in gouache blend the surreal with imagery from my dreams, nature, and objects of personal significance, which always include a heart. The paintings are visually complex, mystical, and layered with rich color and simulated texture." Venue: Spark Gallery, Denver, CO.



WEDDING SILKS. Oil on canvas. 48" x 36"

"I try to portray the ultimate union of nature and spirit via color and pattern. I find that each color has a different mood, a personal statement. My paintings echo the power of the amalgamation of color. Nature inspires and excites me. The world is beautiful, full of color; it is perfection. I wrap my subjects in fantastical textures to enfold them, protect them."

Venue: Sagi Art Studio.



SNEKKE TIED UP. Acrylic. 30" x 40"

"My guiding inspiration is—colors are good for the soul. I combine elements of graphic design, photography, and digital technology to create pieces that feature bright and vivid colors."



DANCING IN RED. Acrylic. 36" x 36"

"In the *Dancing* series, I merge my passions for dancing and painting. I often dance while I paint, letting the rhythm of the music dictate my strokes." Venues: Elida Art Studio & Gallery, Camas, WA; Art On The Boulevard, Vancouver, WA; Washougal Town Square, Washougal, WA.



VISIONS OF ETERNAL LIFE AND BEAUTY. Oil on canvas. 30" x 40"

"Everything that captures my eye and gives me a sense of awe and beauty becomes the subject. I paint landscapes, cityscapes, still lifes, abstract compositions, and developed my own unique style, *Mystical Realities*." Venue: Julie Galeeva Fine Art Gallery, Makawao, HI.



INSIGHTFUL. Paper, acrylic paint, metallic foil. 24" x 18"

"Mandala Art stems from my studies in Eastern religions and metaphysics. They are created as prayers with specific intention. Mandalas are about geometry, symmetry, harmony, and balance. Painting Mandala Art represents my quest for balance and grounding." Venues: Artist of the Valley Gallery, Napa, CA; Gillwoods Cafe, St. Helena, CA; Eyeworks, Napa, CA.



WORSHIP. 18k gold, natural stones. 2" x .75"

"My goal is to connect with new generations through my work. I incorporate into my classic style the contemporary line of today's designs. My work displays organic form, movement, and exotic lines. My technique is fabrication—I don't use any kind of mold. I work with sheets of gold; cutting, sawing, forging, and soldering. My materials are 18 and 22k gold and natural stones."

Venues: Nancy Markoe Gallery, St. Pete Beach, FL; Jewelry of Joy, New Smyrna, FL.



BEING NEIGHBORLY. Oil on canvas. 30" x 40"

"Approaching traditional subject matter in a modern way, I use intimate landscapes to explore the psychology of human relationships. Strong contrasts, precise compositions, and the magic of light and color combine to create paintings full of hope and healing." Venues: Gray Loft Gallery, Oakland, CA; Pro Arts Gallery, Open Studios, Oakland, CA.



WARMBLOOD HORSES JUMPING. Colored pencil on paper. 45" x 64"

"My work is focused exclusively on the creation of hyper-realism equestrian images."
Venues: Museum of Florida Art, Mennello Museum of Art, Nemours Children's Hospital.



BRING ME BACK. Acrylic. 60" x 48"

"They say that all problems have a spiritual solution. That spiritual solution is expressed through color. I collaborate with the paint, and, although my plan is clear from the beginning, I always end up in a different place." Venues: Mayo Hospital, Scottsdale, AZ; Walter Gallery, Scottsdale, AZ; Herberger Theater, Phoenix, AZ.



TOUCH OF LIGHT. Oil on canvas. 18" x 24"

"Movement, texture, and light are my interests. I use a palette knife and oils to create a low relief sculpture on canvas and find inspiration in the beauties of florals and garden landscapes." Venues: Makawao Fine Art Gallery, Maui, HI; Third Dimension Gallery, Kamuela, HI; Maui Fine Art, Kihei, HI.



POD ON STAND. Patinated bronze, forged iron. 14" x 12" x 24"

"Naturally inspired." Venue: Michael Good Gallery, Rockland, ME.



THE FISHERMAN. Acrylic on canvas. 60" x 40"

"This work is another in my series of *On the Waterfront* narrative paintings. By improvising with color, form, texture, and line I attempted to impart the stoic strength of *The Fisherman* and his dominion over the creatures of the Sea." Venues: The Gagliardi Gallery, London UK; Villa Spankadellik, Napa Valley, CA; Walter Wickiser Gallery, New York, NY.



LINOLEUM #1. Pigmented, resinated clay on wood. 36" x 48"

"My work is influenced by mosaic floors, which I interpret into a contemporary design to give the illusion of a linoleum floor."



FLORA. Stained glass mosaics. 20" x 16"

"I love colors, and am fascinated by the variety of colors and textures of stained glass. While working on a new piece, I never plan the color combination ahead of time; it comes naturally as I work."



DIAL I. Ceramic. 17" x 17" x 5"

"My current work is architecturally inspired linear forms. The work is minimalist, monochromatic, and monumental in feeling. This body of work is hand-built with slabs, using low fire clay, under glazes, and glazes." Venues: Gallerie Citi, Terra Gallery, Boston Art.



URBAN SKIES. Oil on canvas. 55" x 44"

"I found these weeds, grasses, and wildflowers thriving in an embankment by a parking lot near the JFK Library in Boston. These are what I refer to as 'urban wilds.' I'm intrigued and inspired by the defiance and determination of nature, and how quickly it can take over and transform an urban landscape." Venues: Bluebrick Studios, Boston City Hall, Josiah Quincy School.



THIS IS THE WAY. Infrared photography. 11" x 15"

"I hope my photography inspires one to to be in a place where the present moment is a wonderful moment." Venues: Tower Gallery, Sanibel Island, FL; 2 Island Gallery, Captiva, FL; The Edison Ford Winter Estates, Fort Myers, FL.



ARUBA BEACH AFTER MORNING RAIN. Photography. 4" x 6"

"My photography attraction ranges from packed images of people dancing at huge, Caribbean carnival celebrations to quiet views on an empty beach. This photo captures the early morning rainbow after a brief rain on the north shore of Aruba at a wind and kite surfing beach."

Venue: Kensington Frame and Gallery, Kensington, MD.



MATRYOSHKA. Bronze. 14" x 30" x 30"

"Bronze is an ancient medium of artistic expression, and I feel privileged to be a part of the line of creators who have used it. I'm enlivened by the feel and texture of the metal, and enjoy using the many tools required to realize my vision. Weaving is an even more ancient human activity, so to bring those two disciplines together is, for me, the greatest joy."



PALO DURO SHADOW. Mixed media on paper. 30" x 22"

"*Palo Duro Shadow* uses a found pattern of shadow and light to capture a moment in time."
Venues: Yvonamor Palix Fine Art, Houston, TX; Marta Stafford Fine Art, Marble Falls, TX; Water Street Gallery, Douglas, MI.



ONE HUG. Oil on canvas. 48" x 48"

"The subjects in my still life compositions are placed on reflective abstract surfaces. In that context the imagery explores inconsistencies. The paintings play with marks, shapes, and color to create compelling images." Venues: The William & Joseph Gallery, Santa Fe, NM;
Jules Place, Boston, MA.



CIRCLES. Enamel on copper. 2" x 2" each

"My art is influenced by color, but finally shaped by experimentation. I find great satisfaction in crafting these small pieces of wearable art and I am grateful for the endless opportunities for exploration and discovery that this ancient medium provides." Venue: Napa Valley Open Studios.



LOOKING THROUGH. Acrylic. 24" x 24"

"My work invites questions and personal interpretation. I want the viewer to wonder what the subject is doing or thinking. This 'interactive imagining' enriches the viewing experience by creating an interplay between the artist, the painting, and the observer." Venue: Cloverdale Arts Alliance, Cloverdale, CA.



GIDDY WITH CONCEPTS. Acrylic on canvas. 40" x 30"

"Auspicious Prediction: casting off concepts and neutralizing time,
he welcomes unlimited space."



HIGH VOLTAGE. Fiber rush, waxed linen, pattern paper. 6" x 10" x 5.5"

"Through experimentation with materials such as fiber rush wire and pattern paper, I explore the compatibility of these two materials and the tension and energy they produce visually and emotionally." Venue: Bates Art Gallery, Bayfield, WI.



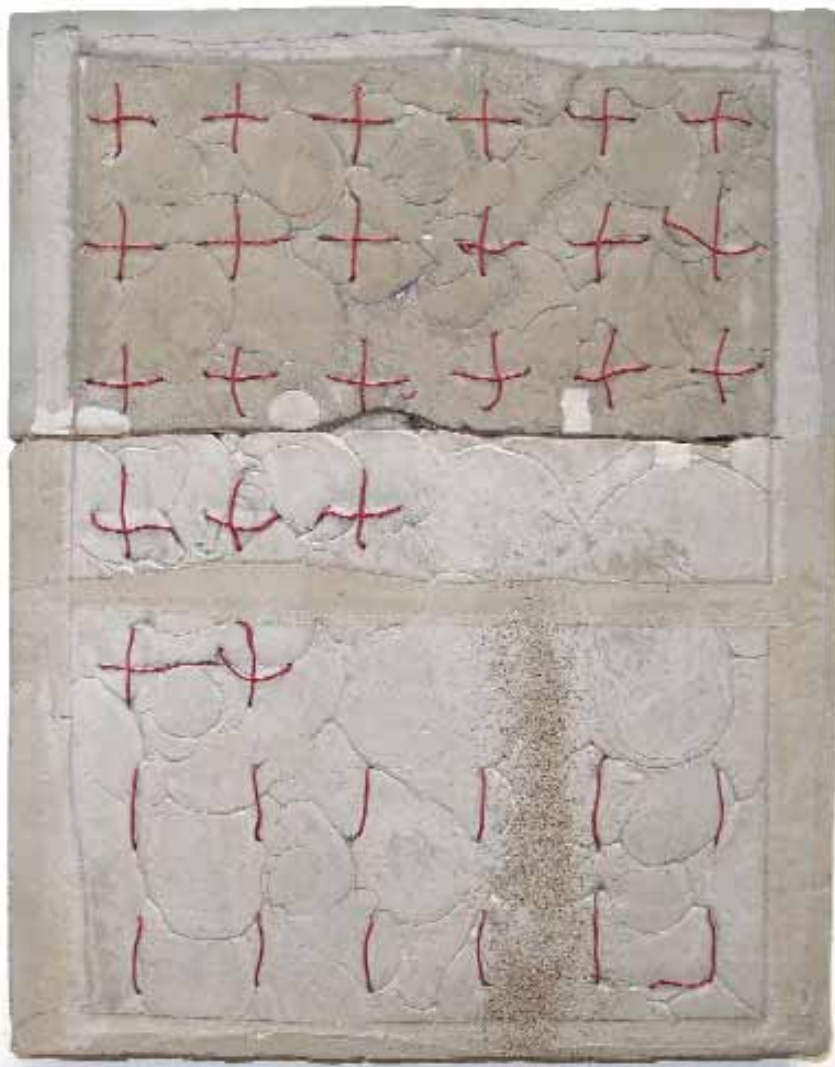
SUNSET FROM SHIP 2. Oil pastel. 14" x 16.5"

"The ocean is always moving and makes me feel alive. Looking from the ship I was able to see and feel the power of the waves first hand. The colors of the sunset reflect in the clouds and the ocean."



ARCHES WITH A MAUVE SOUL. Mixed media on canvas. 40" x 40"

"I use digital artifacts that interfere with photographic image-making to explore the tension between representation and abstraction that exists in the historical relationship between photography and painting. These artifacts are created by energies other than light, thus they produce both a literal and a metaphorical hyper-vision, depicting aspects of reality that we normally do not see." Venues: Leica Gallery, Los Angeles, CA; Funk Zone Studio, Santa Barbara, CA.



BALANCE. Thread, sand, concrete. 12" x 15" x 1.5"

"Searching for the fine balance between textile and concrete."
Venues: Gallery Lulo, Healdsburg, CA; Aberson Exhibits, Tulsa, OK.



SINGING ON THE ROCKS. Oil on canvas. 54" x 56"

"I believe that paint has a language of its own, in addition to the image, and painting is also a way to connect to an inner narrative and distill my feelings. I want a scruffy, romantic elegance without being overtly sentimental." Venue: A PROOF Contemporary Art, Washington, DC.



POD VI. Wood fired ceramic, forged brass. 4" x 4" x 6"

"Clay, wheel, trim, bisque, glaze, pack, load, cones, anagama, wood, flame, stoke, heat, gloves, mask, coals, work, ash, friends, food. These are the words of wood firing, these are my words, they are the language of my art." Venues: The Island Gallery, Bainbridge Island, WA; Imogen Gallery, Astoria, OR; Art on the Boulevard, Vancouver, WA.



LIGHT IN FREEPORT. Acrylic on canvas. 24" x 24"

"Observations, daydreams, and experiences encourage my creative endeavors and kindle a desire to paint. My paintings are the outward conveyance of an inner process of thought and consideration of the occurrences of a sometimes bewildering world."



FALL OAK NECKLACE. Fine silver, sterling, acorn. Actual size

"My work is an homage to nature, an exploration of integrating precious materials and found flora to create a marriage with form and function." Venues: Graton Gallery, Sebastopol Center for the Arts, Sonoma County Art Trails Open Studios.



LAND GRAB 2. Oil, gold leaf on panel. 12" x 12"

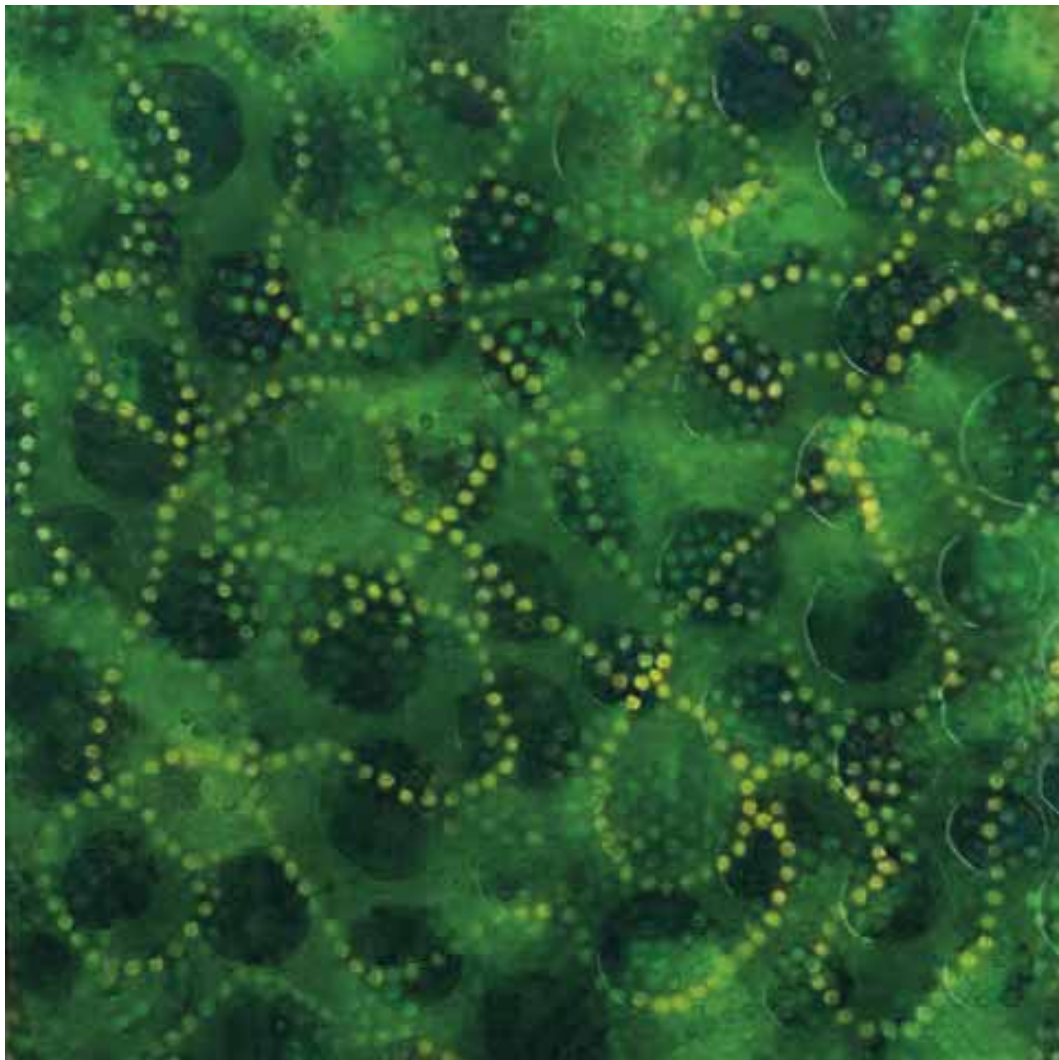
"*Land Grab 2* represents our ongoing struggle to maintain a loving and responsible relationship to care for the land and respect nature." Venue: Sebastopol Center for the Arts, Sebastopol, CA.



TRUE, SPONTANEOUS ENERGY. Collage, acrylic on panel. 6" x 6"

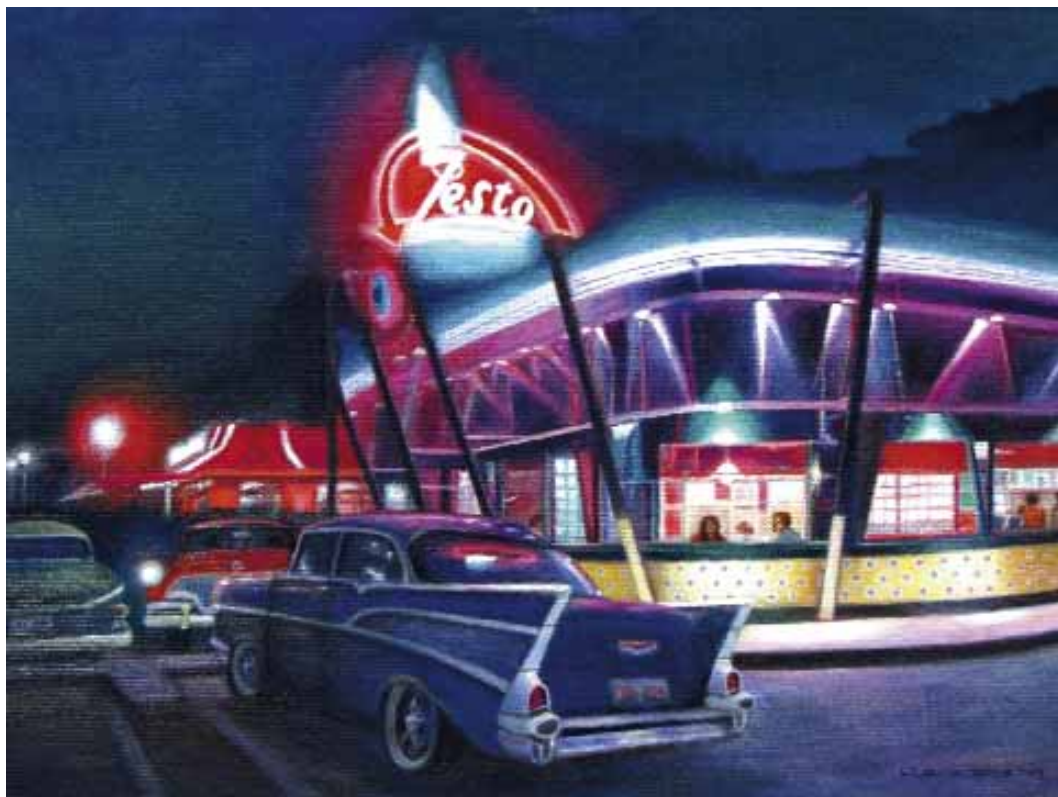
"I began the *Fragments* series of collages for an exhibition in 2010 and have, intermittently and joyfully, continued this series to further explore the interrelationship of pattern, color, and texture. Recently, thirty-six of these newly created, small works were featured in a solo gallery exhibition."

Venues: Capitol Art Collection, Santa Fe, NM; UNM Health Sciences Center, Albuquerque, NM; RioBravoFineArt Gallery, Truth or Consequences, NM.



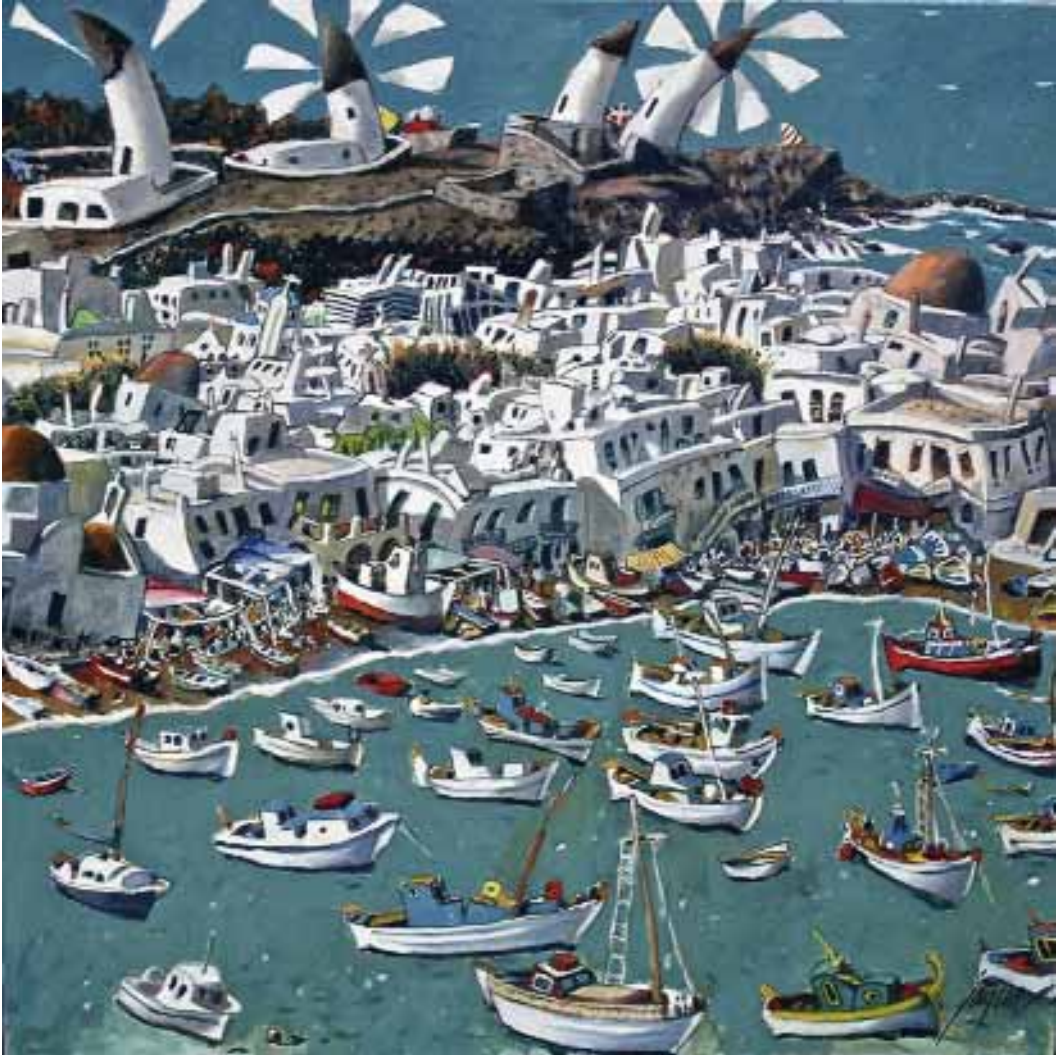
CELLULAR PATTERN - GREEN VI. Acrylic on canvas. 36" x 36"

"Time-based meditative processes such as repetitive patterning and marking, repetitive making, weaving, and stitching inform my art. My focus is to make art that connects with my inner self, embodying both my past and present." Venue: Newyorkart.com.



ZESTO. Oil on panel. 18" x 24"

"I love creating the grace and ambience of bygone eras, especially the unique American features of the 1950's and 1960's: nostalgic buildings, restaurants, and classic cars."



GREEK ISLAND. Oil on canvas. 30" x 30"

"If there is dust on the ceiling, it usually means that no one has bothered to look in that direction. Or, they just don't have an attachment that long." Venues: Ali's Gallery, Seattle, WA; Dooley Gallery, San Anselmo, CA; Hage Gallery, Long Beach, CA.



MASK. Vitreous enamel. 4" x 4" x 1.5"

"My enamel art objects: utilitarian vessels, wall pieces, and wearables, are recognized for their humor, and technical awareness and experimentation in enameling combining compatible pyro-materials, glass, metal, ceramic, and gilding techniques. The themes reflect observations of nature, nurture, mankind, and the world around us."



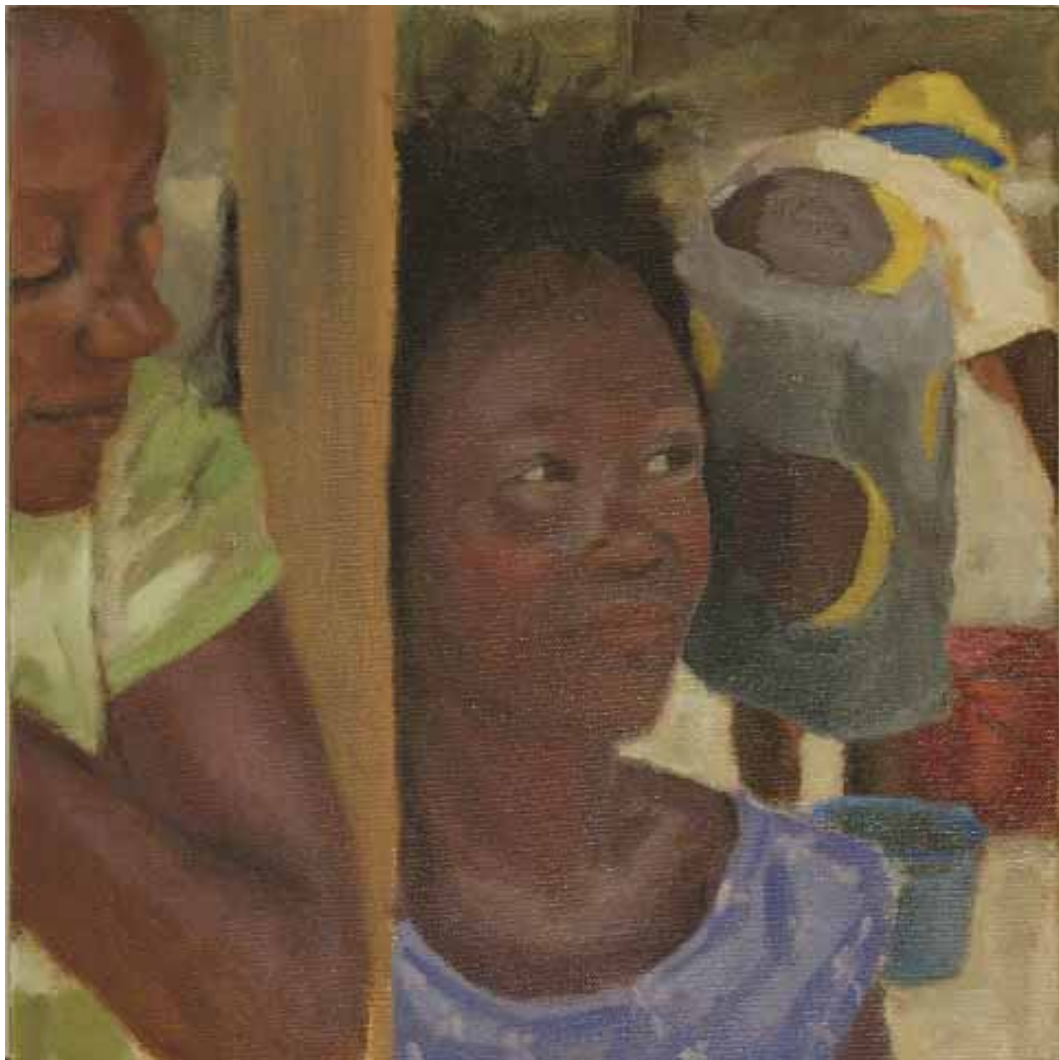
HABITAT DESTRUCTION #1. Steel, leather, thread. 6" x 16" x 16"

"My work tells the story of the impact of civilization and industry on our environment. Inspired by artifacts in museums of natural history, I imagine what would be found after we are gone and what that would tell about us." Venues: Marin Museum of Contemporary Art, Fiber Dimensions, San Anselmo Artist Studios.



ELEVATE, NO. 15. Acrylic, watercolor pencil on wood. 12" x 12"

"I am a San Francisco Bay Area native who has painted professionally since 1999. My abstract paintings include organic textural elements superimposed with a conscious linear structure."
Venues: Desta Gallery, San Anselmo CA; Collector Art Shop, Berkeley and Oakland, CA; Misho Gallery, San Francisco, CA.



PATIENCE 2. Oil. 12" x 12"

"My work mainly consists of Russian icons and African children. I want to capture my love of color and line, faces that make you wonder, and the spiritual—all slipping onto the canvas."



SANCTITY GRIS GRIS BOX. Mixed media sculpture, silver point. 20" x 20" x 4"

"My work explores the relationship between sexuality and ethics within a sphere of politics and spirituality. With influences as diverse as Jung and Warhol, new combinations are created from both explicit and implicit layers. As spatial terms become transformed through emergent and critical practice, the viewer is left with an impression of the ideas of our future."



SOFT PRAIRIE DAY. Oil, sand texture on panel. 36" x 48"

"I create contemporary landscape and abstract images. I work exclusively in oils on both birch panels and hand-stretched canvas. Paintings are both colorful and serene." Venues: Evalyn Dunn Gallery, Westfield, NJ; Gallery 13, Minneapolis, MN; ADC Art Consultants, Cincinnati, OH.



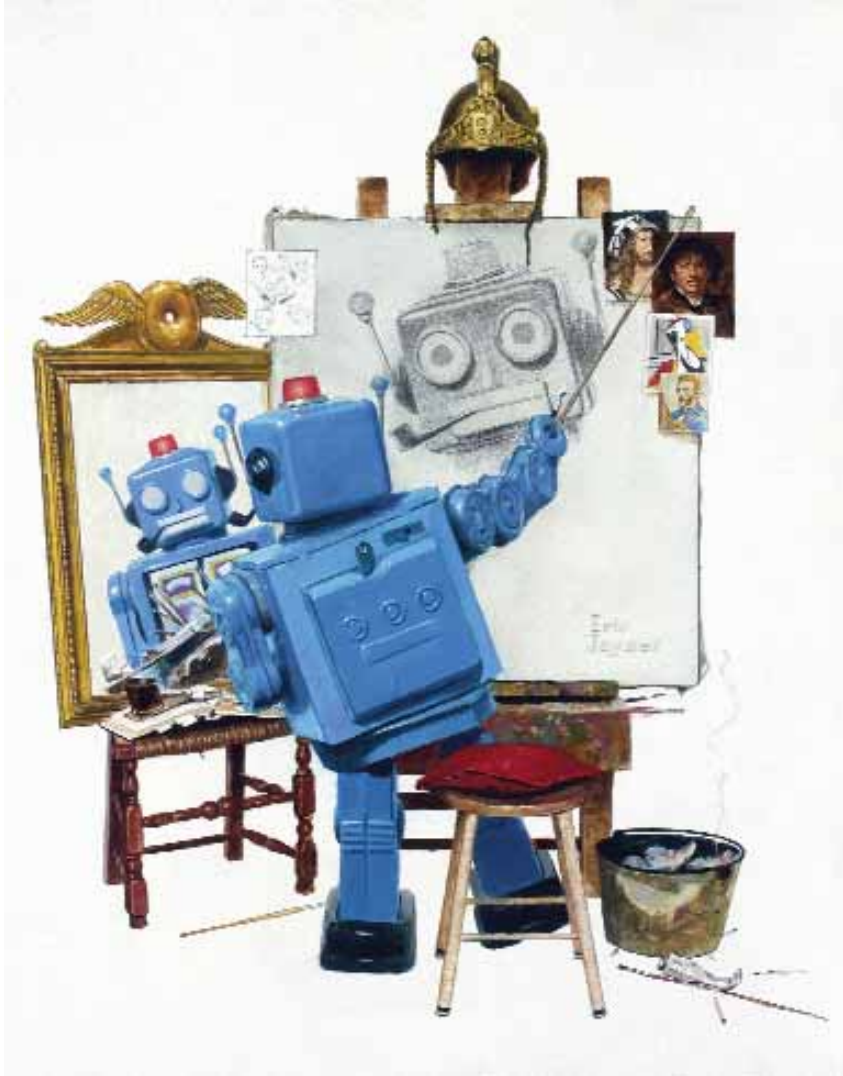
SCARLET PEAR. Oil on panel. 7" x 5"

"I select simple subjects and use them as an excuse to play with paint. My subjects do not always behave. They slip and slide in and out of abstraction, and it is all I can do to wrestle them back into some semblance of themselves." Venues: Richard Sumner Gallery, Palo Alto, CA; St. Michael's Alley, Palo Alto, CA; Blessingwell Gallery, Paynesville, MN.



LILY OF THE NITE (AGAPANTHUS CAMPANULATUS). Photography. 44" x 60"

"I discover that nature is an important source of daily inspiration—whether we are an artist or not. The image on this page is from a series of seventy-five flowers: *Recycle Beauty*. My intention is to use a much-beloved but now antiquated medium of photography to capture images of a fleeting beauty. I use an old Polaroid camera and scanner to create the images. The ideal is to recycle technology in a digital world."



SELF PORTRAIT. Oil. 24" x 18"

"This is a portrait of the artist as a robot. An homage to Norman Rockwell."
Venues: Corey Helford Gallery, Miller Gallery.



SUMMER HEAT. Monotype. 35" x 25"

"This image is part of a new series inspired by the idea of rivers. I made these first monotypes in NYC with printer Lisa Mackie. The final group will be installed in the Main Library in Dayton, OH."
Venues: The Art Store Gallery, Charleston, WV; Angela Meleca Gallery, Columbus, OH.



WAVE FORM V. Painted resin sculpture. 20" x 36" x 13"

"Fascinated by the paradox of water as sustainer of life and agent of destruction, my 'water' sculptures are an attempt to convey my emotional response to an element that soothes, nourishes, and occasionally terrifies." Venues: Artnet Monographs, Heather Gaudio Fine Art.



RAKU RED. Clay. 10.5" x 7"

"Making art from clay goes back to the beginning of the human experience. It is always with great wonder and excitement that I approach the magic of taking the basic elements of the earth to create new forms to enhance and express our lives."



ROSE AND A BIT OF LACE. Pen and ink drawing. 14" x 10"

"All of my art is an illusion combining what I see and my imagination so I can share a story. My hope is to unlock the viewer's imagination and allow our two worlds to unite for a moment. I work in ink on rag paper, one stroke at a time, until I reach the goal of a unique work of art."

Venue: Lake Eustis Museum of Art, Eustis, FL.



ETHEREAL MEDUSOZOA. Aluminum sculpture. 101" x 47" x 29"

"The arts speak every language without a word and I think sculpture attracts and connects like-minded people. Each of my sculptures express a feeling, and that feeling speaks in a way that makes the viewer understood. I strive to make art that makes people smile, feel good, and empowered to pursue dreams." Venues: Rosenbaum Contemporary, Boca Raton, FL; Edward Dare, Charleston, SC; Pop Gallery, Santa Fe, NM.



POPPY. House enamels on canvas. 28" x 22"

"My work is a culmination of experience and emotions. I prefer to let the medium express itself through me, so that I am the vehicle. Ideas come through music, books, history, and experiences."



PORCELAIN PINWHEEL CUPS. High-fired porcelain. 3.5" x 5" x 4"

"I have been creating functional pottery since 1979. I love creating everyday art for my customer's table, kitchen, or home. Clay is an art form you can wrap your hands around as well as enjoying the sculptural simplicity of form." Venues: Eleos Coffee, Kansas City, MO; Evening Shade Farms, Osceola, MO.



DENISE 6. Photographic print on aluminum. 30" x 45"

"I have been photographing landscapes, architecture, and the female form for nearly forty years. I look for patterns, textures, and lines that distill the subject." Venues: Vintro South Beach, Miami Beach, FL.



YOSHIHIDE'S DAUGHTER. Giclée print on rice paper. 6.7" x 10"

"This piece is from a series of illustrations to novellas by Ryunosuke Akutagawa."

Venues: Third Friday Gallery, Oak Park, IL; Rosa and Ta'amon Galleries, Jerusalem, Israel;
Zonk Gallery, Philadelphia, PA.



SONGS OF THE BLACKBIRD, #2 IN THE BIRD-WATCHER SERIES. Oil on canvas. 48" x 62"

"Curiosity about birds, their habitat, habits, food and nesting led me to develop the *Bird-Watcher* series. Each painting is a portrait of an existence meant to inspire curiosity and encourage people to stop and observe the beauty around them."



ODE TO DAVID SMITH. Bronze. 23" x 20" x 6"

"David Smith exhibited his *Medals for Dishonor* in 1968 at Willard Gallery, accompanied by his own prose poems that revealed his outrage. At twenty-four years old, I was angry after my military service (1962-1968) and he was my Bible. He was one of the greatest American sculptors, hence my *Ode to David Smith*."



IT'S A NOSE BOWL NOT A ROSE BOWL. Blown glass, neon, mixed mundane media. 20" x 12" x 12"

"Blown glass vase with single electrode neon stick. The nose flowers have shards of blown glass, papier-mâché sticks, and confetti. What else would you need for a vase of noses? Just plug it in!"
Venue: Mid Mod and Gallery, Denver, CO.



QUEENSBORO. Acrylic on canvas. 60" x 45"

"I've been using bridges as my main subject matter for more than a dozen years. I compose with the camera and then select the images that I recreate as paintings. I abstract the form from the context and then render it as faithfully as possible. I call my style Abstract Realism. This painting is from a recent series that explored East River bridges in New York City." Venues: George Billis Gallery, New York, NY; ZIA Gallery, Winnetka, IL; James Gallery, Pittsburgh, PA.



CONTINUUM. Steel, pencil, erasure, paper. 84" x 36" x 36"

"My work integrates research, experimentation, and exercises in creating kinetic sculptures to generate drawings, etchings, digital imagery, and sound. Harnessing natural phenomena like UV, wind, and waves, each piece generates the artwork over prescribed twenty-four-hour periods."

Venue: Brown Grotta Fine Art, Wilton, CT.



SKY CITY. Oil on canvas. 30" x 40"

"I paint the historical landmarks and dramatic landscapes of the Southwest using colors of the sky and soil, rocks, and vegetation for my palette. I can't copy nature; I just offer her my thanks."

Venue: Wild Holly Gallery, Carefree, AZ.



COMING STORM. Reconstructed, repurposed jewelry. 30" x 10"

"My fascination is in telling a story with jewelry by blending old with new to create wearable, one-of-a-kind art. This piece is about the disparity of goodness and evil... it was all pink cotton candy and butterflies until the monster arrived."



COSMOS, WINDOW SCULPTURE. Stained glass. 28" x 22" x .25"

"My previous work has been with clay and glass using mandala motifs from ancient cultures. This pattern I believe works better in stained glass. My aim is to bring the motifs of ancient cultures into a contemporary form."



GEOMETRY OF VENETIAN TRANSPARENCIES (DIPTYCH). Mixed media on canvas. 8" x 18"

"Studying art in my native Venice, Italy, I endeavored to capture in my work the spirit of the traditional Venetian fresco technique. Tintoretto, Tiapolo, and Canaletto were my inspirations. I revisit Venice periodically and my current work honors Canaletto's studies of the Lagoon."

Venue: Creative Coworkers, Evanston, IL.



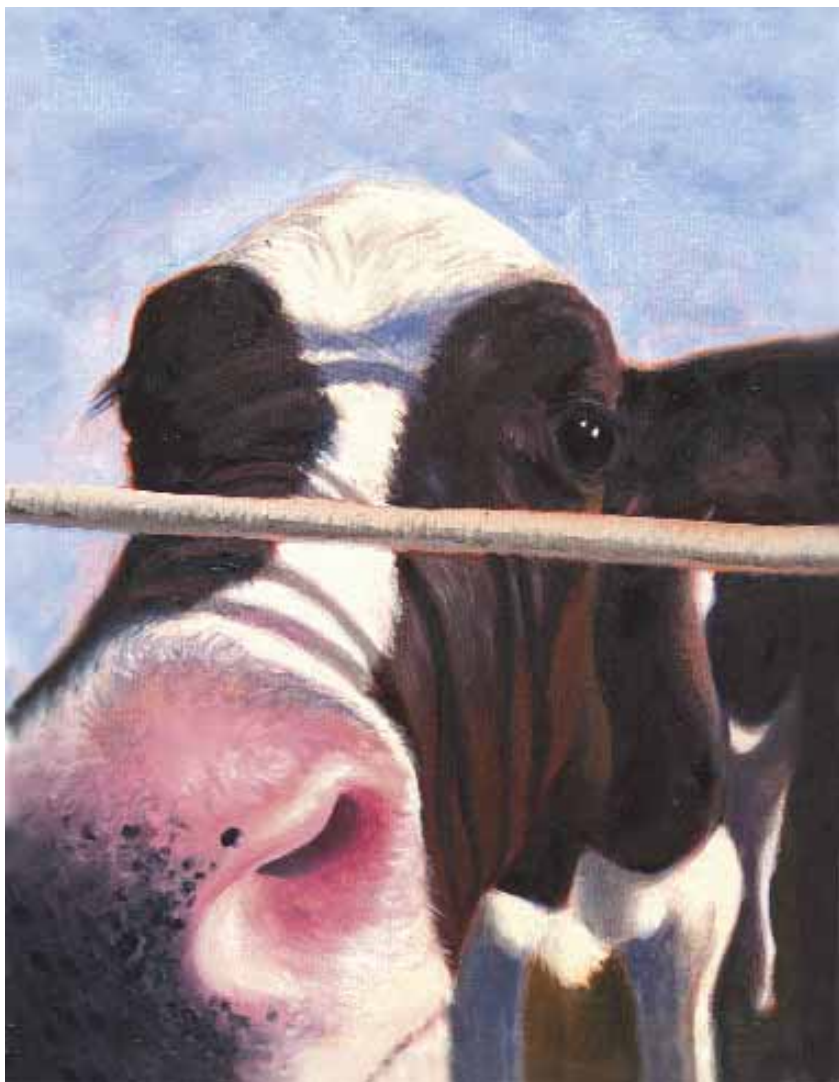
EYE OF THE BEHOLDER. Image transfer on resin, aluminum, wood. 63" x 18" x 4"

"I create meaning using the relationships between image and object, text and texture. Each piece is built into a narrative using the content inherent in the materials. They are constructed in layers, physical layers as well as layers of meaning." Venues: Gallery Five18, Boise, ID; Visual Arts Collective, Boise, ID.



THE BEGINNING AND THE END. Oil, silver leaf on canvas. 36" x 48"

"Inspiration comes to me in many forms. Light reflecting off the ice-covered bay or the dew on a rose petal inspire. I approach the canvas with abandon, developing a colorful journey without boundaries." Venues: SCA Open Studio Tour, Dartmouth, MA; The Art Drive, Dartmouth, MA.



CURIOUS CALF. Oil. 20" x 16"

"I am interested in the way light, color, and texture interplay, capturing atmosphere. As my work matures, colors deepen, shapes simplify, mystery overshadows sweetness; suggestion replaces precision. My desire is to create light, mood, and story. Art is Life." Venues: Collector Art Shop, Berkeley, CA; Art Works Downtown, San Rafael, CA; Jessel Gallery, Napa, CA.



100TH TOUR DE FRANCE - PARIS. Photograph. 10" x 15"

"My work is Street Photography. I study our lives and interactions in our urban environments. Here, I'm observing the world focus on this huge sporting competition, the intensity and technique of the riders and the energy of thousands of spectators." Venues: The Late Show Gallery, Kansas City, MO; The Salmagundi Club, New York, NY; Street Art Fairs in the Midwest.



EVOLUTION. Oil. 60" x 60"

"The name for this piece came about when I hung up four original oils that I had painted as a young girl. It was obvious to me and to everyone else that the evolution of my work was drastically different now. So, as I contemplated naming my current piece, it seemed appropriate to simply call it *Evolution*." Venue: Sotheby's Southhampton, NY.



SEA BLUE. Acrylic, collage on canvas. 40" x 30"

"I paint as much from my imagination and dreams as from images in the real world. Using color, texture, and mark making, I explore an internal landscape that leads me to mysterious, unexpected places and reflects my love of nature."

Venue: SFMOMA Artists Gallery, San Francisco, CA.



METAL PIERCED. Pigment inkjet print on aluminum (UV-curable inks). 40" x 30"

"I am a fine art photographer who captures architectural structures in an abstract manner. The long zoom lens on my digital camera allows me to clarify a chaotic visual scene into a quieter composition that emphasizes color, line, and form." Venue: Torpedo Factory Art Center, Alexandria, VA.



BARCROFT HILLSIDE. Oil on board. 20" x 16"

"Painting on location is my pleasure and challenge. Composition is determined by the slope and character of the land. I work intensely using many layers of paint. My brushstrokes provide texture, but the essence of 'place' is the color of the day and the unique site." Venues: Touchstone Gallery, Washington, DC; Studio 301, Torpedo Factory Art Center; BlackRock Art Center Gallery, Germantown, VA.



BUCKWHEAT. Acrylic on birch panels. 48" x 40" x 3"

"My work is about the natural world and my place in it. The patterns reflect my presence in a landscape full of birds and plants. That landscape is quiet, peaceful, transformative.

I hope to create a feeling of peaceful harmony for myself and for the viewer."



YELLOW WINDOW. Fiber collage with over stitching. 32" x 32"

"As a collaborative team, we like to examine the essential elements of our surroundings. Through our process of building over each other's work, we distill vivid blocks of color and texture into images that become vaguely if not distinctly familiar."



LEAP. Silk painting. 14" x 14"

"I was educated in graphic design at the London College of Printing. I discovered silk painting by accident, and find it liberating. The luster and reflective qualities of the fabric seem to exude elegance and grace. I hope my work is uplifting." Venues: Lafayette Art Gallery, Lafayette, CA; Carmel Bay Company, Carmel, CA; Transitions by CMI, Dalton, GA.



BONGO MAN. Black walnut from Sebastopol, CA. 32" x 16" x 16"

"I carve to feel independent 'n free. I love to create—move mi energy in da wood n mek a person feel a way I feel. I dunno no more words 'cept da beauty of da wood tell its own story, seen." Venues: Esterlina - Everett Ridge Winery, Healdsburg, CA; Sonoma County Art Trails.



THE GORDIAN KITE TANGLE. Powder-coated steel. 15' x 6' x 6'

"This public sculpture for the City of Vista celebrates the Gordian Knot, experienced as common denominator to many kite enthusiasts when strings have crossed and lines entwine. It is a historical reference to Alexander the Great and flight of organic forms."



GHOST SERIES, SELF PORTRAIT. Mixed media, pastel, gouache on paper. 18" x 15"

"My oil, mixed media, pastel, and gouache paintings are stylized representational images that exude an allegorical quality. They depict a state of mind in which the boundaries between reality and dream are being blurred."



ELEVATION. Acrylic, mixed media on canvas. 36" x 48"

"I paint in an expressionistic style, with bold brushwork and color. This process produces a state of receptivity which awakens a sense of wonder and awe of the workings of the universe."

Venues: Green Chalk Contemporary, Monterey, CA; Porter Contemporary, New York, NY;
Longview Gallery, Washington, DC.



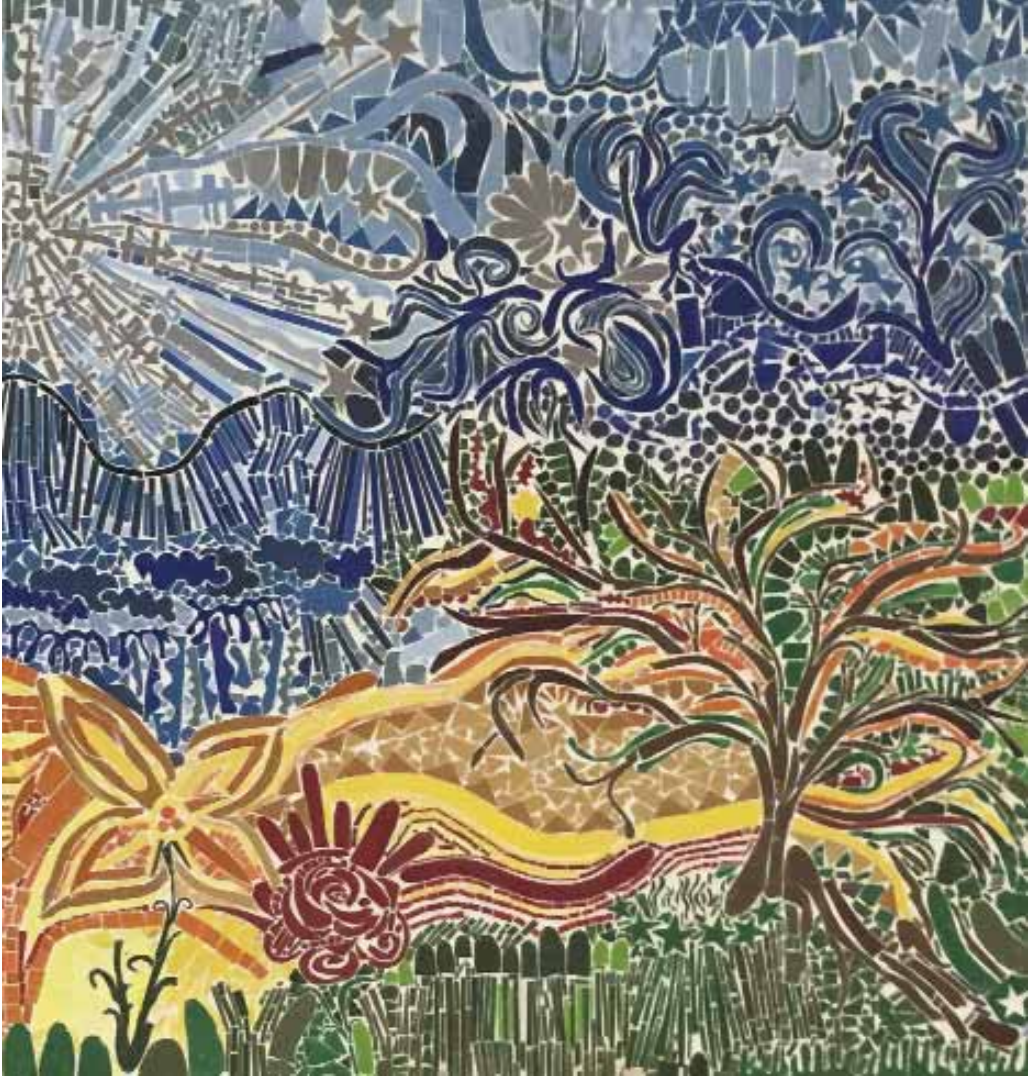
PEACH HIBISCUS. Acrylic on canvas. 22" x 28"

"Purity of expression is the constant desire. I distill the essence of my subjects and portray them with as little information as possible. This complex challenge leads to an economy of form and a profusion of exciting color."



THE ADVENT OF ATMOSPHERIC HEATING. Oil on canvas. 108" x 84"

"A consensus now exists that life will be found elsewhere in our solar system and in the larger universe, with only a matter of time until it's located. The mastery of finding life in the universe serves as a measure of success of our own civilization, and the way we procure such knowledge. This discovery will stimulate us to find ways to heal our own beleaguered planet, a story depicted in my paintings." Venues: Sandra Lee Gallery, SFMOMA Artists Gallery, Coit Tower Video Projection.



FRANKIE VALLI. Ceramic tile on wood. 48" x 48"

"My colorful and abstract style is influenced by the innocent and carefree early childhood I shared with my twin sister, Rachel. I make my own tiles from Sculpey clay and often start creating before deciding what the focus will be. My work is available through the non-profit Art in Giving."



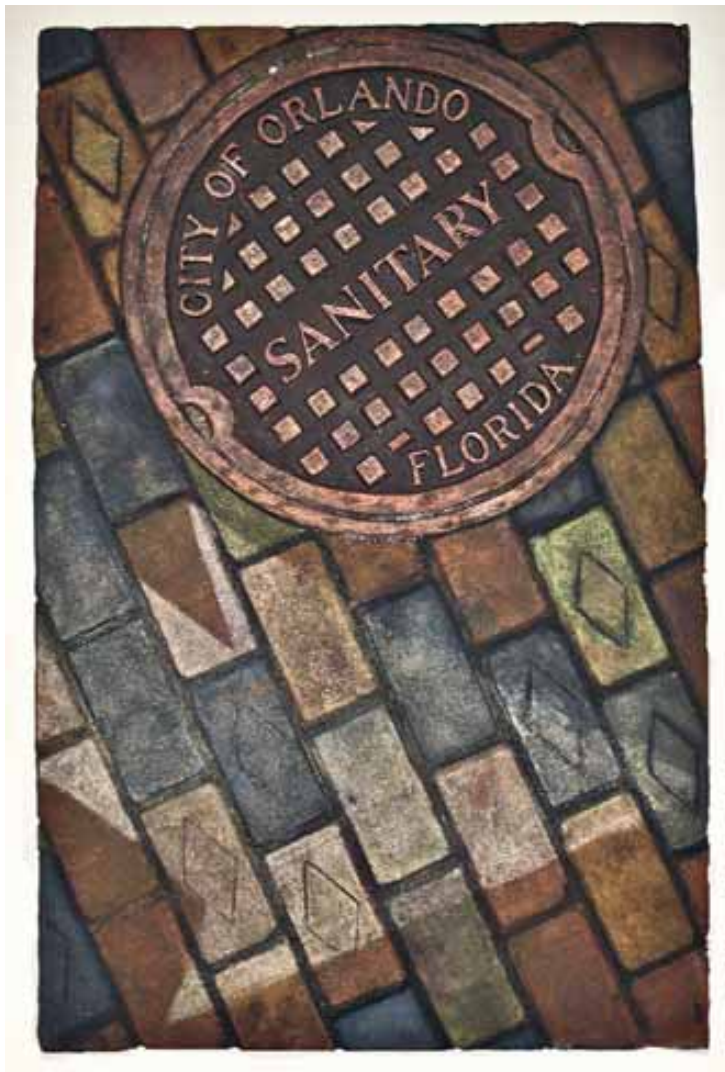
WINTER SOLSTICE. Oil on canvas. 30" x 10"

"Painting the same location year after year and season after season gives resonance to my *plein air* work. With the cypress trees as my focus, I love capturing the surrounding reflections, clouds, and foliage by laying vibrant color next to vibrant color." Venue: Cultural Council of Palm Beach County, FL.



BAITED. Precious metal clay, lampworked borosilicate glass. 6" x 3.25" x 1.25"

"My jewelry is wearable sculpture, created to inspire reactions in both the individual wearing the piece and the public viewing it. Precious metal clay enables me to achieve high levels of detail, varied forms, and extreme textures in fine silver." Venues: Crocker Art Museum Store, Sacramento, CA; Tiger's Blood Social Club, Alameda, CA.



CITY OF ORLANDO. Sculpture relief. 48" x 31" x 3"

"Most artists look outward or upward. My focus is downward. The *Grate Works of Art*, based on manhole covers, water covers, grates, and drains, venerate the common objects of our streets. The manhole message is—conserve and protect our precious resources!"
Venues: Women Environmental Artists Directory (WEAD), National Association of Women Artists, WUCF-TV Artisode #108.



HILDA LA OBBINI OMO ELEGGUA. Acrylic on canvas. 67" x 54"

"Hilda was a Cuban friend and collaborator with *Secrets Under the Skin*, an arts-based research project linking the Ewe peoples of West Africa with the Arará peoples of Cuba. She is pictured in a cane field, liberating her ancestral spirits, metaphorically represented as butterflies." Venues: SFMOMA Artist's Gallery, San Francisco, CA; Joyce Gordon Gallery, Oakland, CA; Museo Barredo Guerra, Perico, Matanzas, Cuba.



JUST WASHED. Watercolor. 9" x 12"

"The transformation of a common cultural reality through the artist's memory and imagination is the creative aspect of art, and its measure of success is the degree to which the work reveals to the viewer a novel and interesting interpretation—or perhaps unknown corner—of that reality."



BLUE WATER. Oil on canvas. 48" x 60"

"Blue Water is an interpretation of the Pajaro River on the Central Coast of California, near my studio." Venues: Gallery North, Carmel, CA; Robert Allen Fine Art, Sausalito, CA; Desert Art Collection, Palm Desert, CA.



LIGHT FROM THE PAST. Carved patagonian onyx, stainless steel base and stand. 21" x 9" x 3"

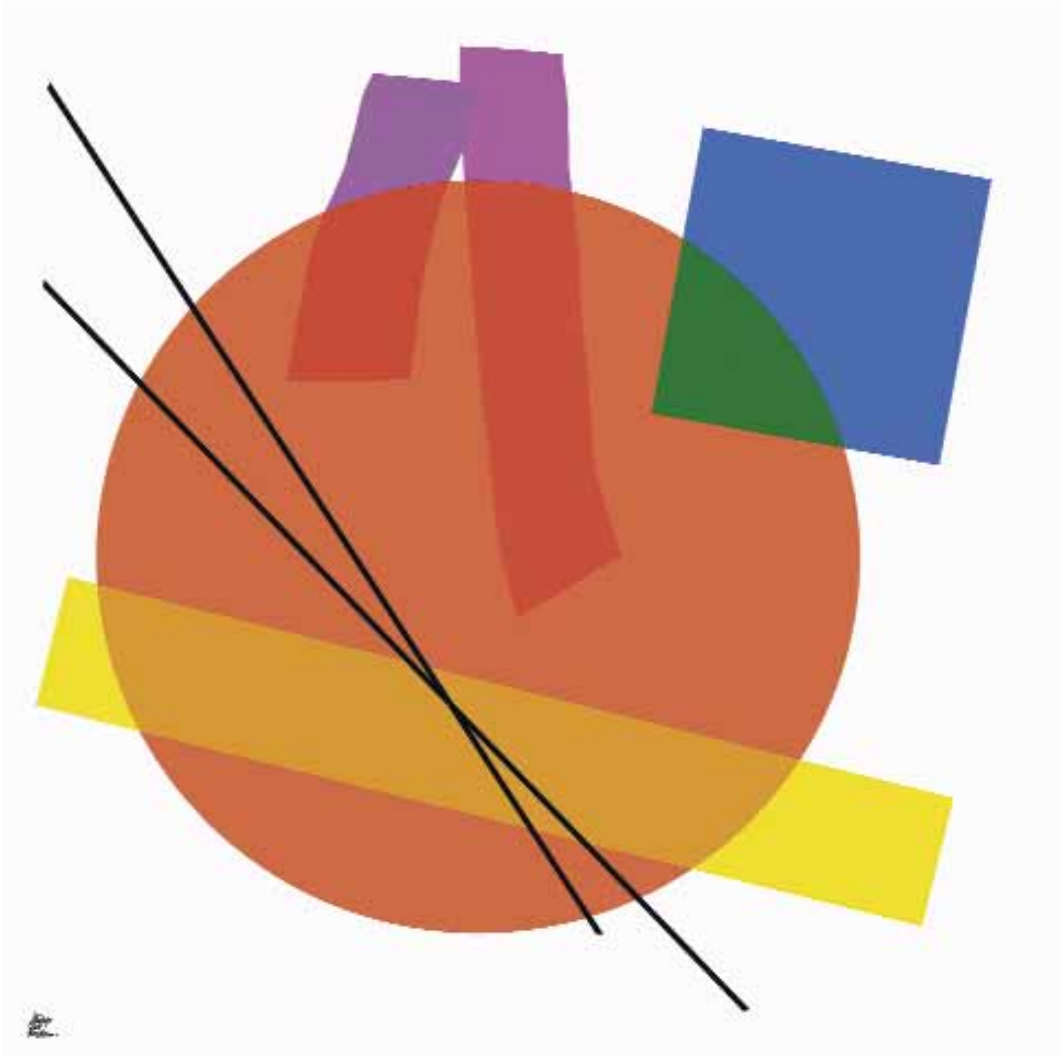
"My work is direct stone carving, mostly in marble. The shapes are abstract in design."
Venue: Santa Cruz Open Studios.



SURVIVOR. Acrylic on board. 30" x 20"

"My goal and inspiration is to create art that either tells a story or evokes a certain mood or emotion. My paintings are usually figurative, and consist of mixed media, oil paint or acrylics.

I enjoy using harmonious and vibrant colors to capture my audience. Here, I've chosen to use a portrait entitled *Survivor*, which celebrates a woman's silent strength while going through a traumatic experience."



UNTITLED #18. Digital inkjet print. 41" x 41"

"After many years in design and commercial art, in 2002 at seventy-two years old I turned to digital art, much of which is influenced by my art exposure as a young person."



CATHARSIS. Sculpted glass. 84" x 20" x 20"

"I am influenced by fractal geometry and the organic designs found in the spontaneous structure of geodes and minerals. The polished, hand-shaped elements of *Catharsis* are composed like windows into the beauty of the whole structure, while the dichroic glass elements serve to capture the surrounding, ever-changing light." Venues: Bill Meek Studio & Gallery, Houston, TX; Art Museum of South Texas, Corpus Christi, TX; Shidoni, Santa Fe, NM.



THE COLOR PROJECT. Metal. 5.15" x 6"

"Red, green, and blue pixels give us flat pictures on our computer screens. Let's make the pixels big and walk between them. We can tune LEDs to various hues, which hold promise for improving depth perception on bridges and in urban areas." Venues: The Artful Gallery, Blacksburg, VA; Heartwood Gallery, Abingdon, VA; Miller-off-Main Gallery, Blacksburg, VA.



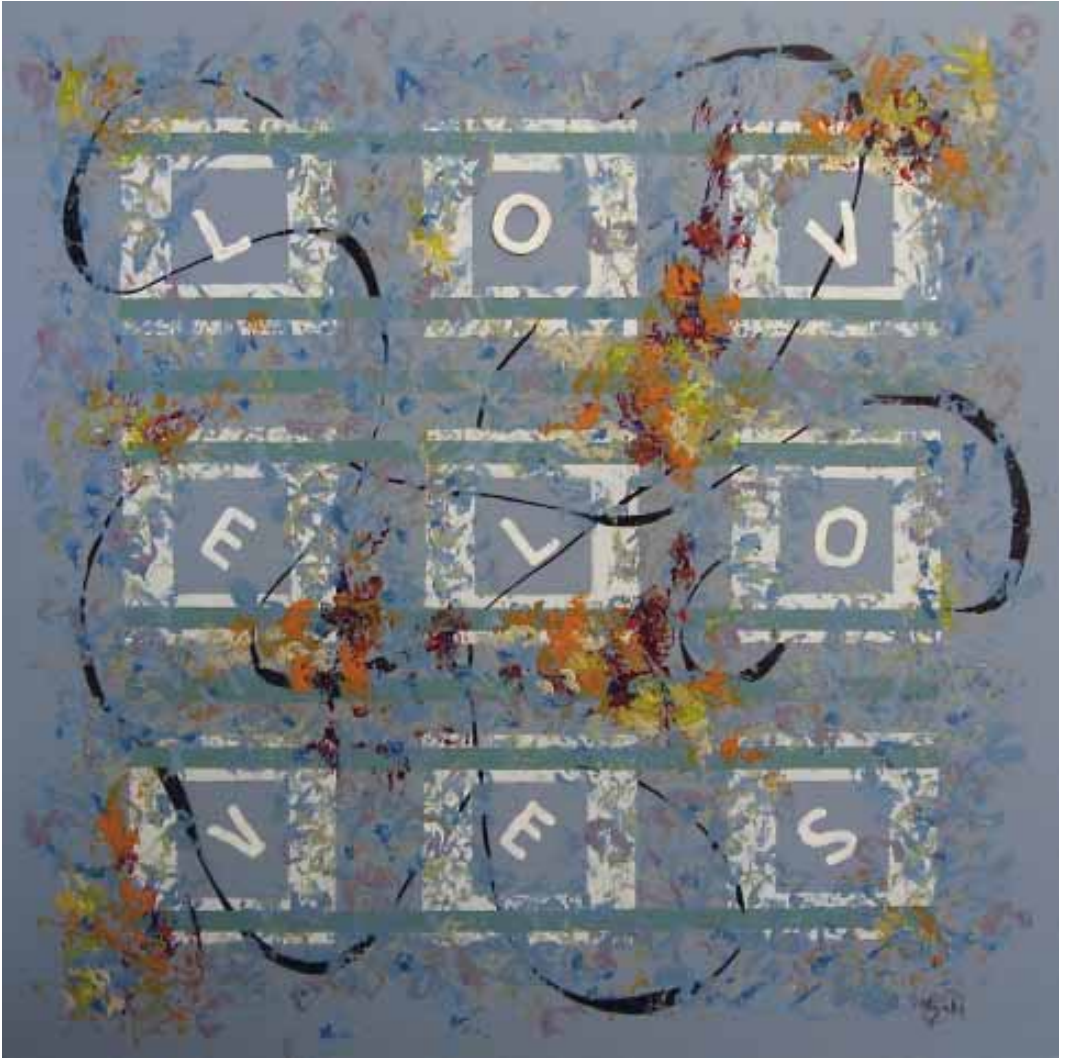
TURTLE BUTTE. Clay. 7.5" x 8" x 8"

"When I played in the mud as a child, I had no idea I would eventually create works of art out of clay. My images delight me because they aren't known to me until they exist."



INDEPENDENT STRENGTH. Acrylic. 40" x 30"

"I am a visual artist and designer. Most of my art is abstract, emotional canvases, where I let nonrepresentational shape and intense color tell a story to evoke emotions. It is poetry in contrast to the prose of realism." Venue: Button Up, Delaware, OH.



M-GRID 4-15-15. Acrylic, mixed media. 36" x 36"

"My M-grid theory of the flowing grid (as opposed to the horizontal and vertical grid), is taking a new twist here. The letters are a new addition."



ELE-01-02-15. Water-soluble wax crayon on watercolor paper. 10" x 14"

"I love color! The high emotions, the low emotions, the exuberance associated with luscious color palettes drive me wild. For a long time I have worked with subdued colors, but in this body of work I made the conscious decision to work with brightness, pushing saturation and bold color schemes as much as I can." Venues: McGuire Real Estate, Berkeley, CA; ArtZone 461 Gallery, San Francisco, CA; Oakopolis Gallery, Oakland, CA.



PRINCESS CONFRONTS THE RAT KING. Watercolor on Yupo. 26" x 20"

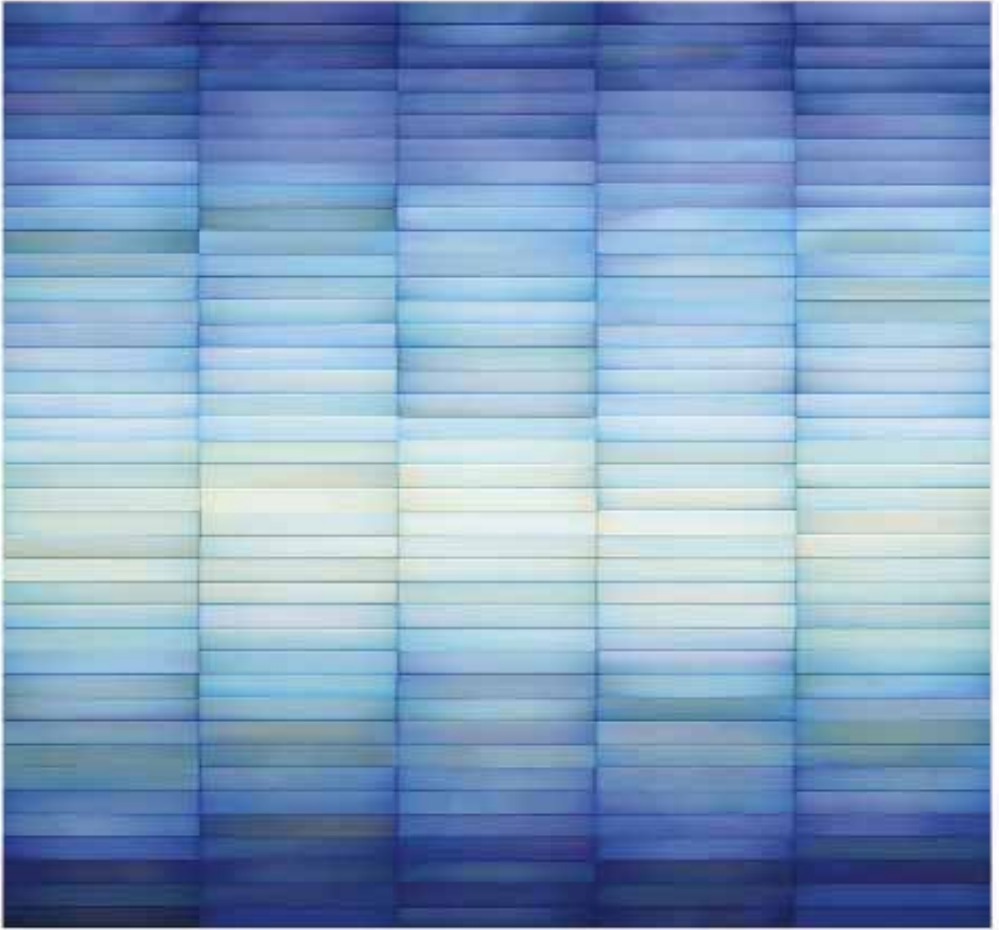
"As with most artists, my goal is to engage the observer, often using a storyline and bold colors. Here is the young princess standing up brazenly to the nasty Rat King for the first time in her otherwise charmed life." Venues: The Stutz Building, Indianapolis, IN; White Key Gallery, Valparaiso, IN; Felder Gallery, Port Aransas, TX.



TAKING FLIGHT. Oil sticks, acrylic. 36" x 48"

"The revelation of what the canvas can become is the reason I love to paint. My goal is to create paintings not instantly recognizable, rather evoking inherent meaning to the viewer."

Venues: Over the Mantel Gallery, Columbia, SC; Studio Carlisle, Columbia, SC.



GLACIER LIGHT. Painted metal on wood panel. 60" x 66"

"Our artwork is focused on contemporary, abstract wall sculpture, made of various finished metals to emphasize rich color and luminous surface. We have created many custom pieces for hotel lobbies, financial institutions, and medical facilities throughout the world, working closely with architects, designers, and art consultants." Venues: Kaiser Permanente, Los Angeles, CA; JW Marriott, Zhengzhou, China; Sands Cotai Central, Macau.



SURREAL EVENING. Oil on panel. 24" x 30"

"Trying to guess what a seagull living on the edge—still for a few moments—sees in a sunset can shift one's imagination onto pathways beyond real time, an inspiring thing to do."

Venues: Marin Museum of Contemporary Art Gallery, San Francisco Women Artists Gallery, Marin Society of Artists Gallery.



SELF-PORTRAIT WITH DAUGHTER. Birch wood. 50" x 9" x 10"

"Having my works widespread into different techniques and genres, I always had actually one main desire—to express the human emotion. Human emotions, once created, never disappear, similar to quantum of the sunlight. They are adding a quality of Humanity to the Universe."

Venues: Hartz Gallery, St Louis, MO; LuminArte Gallery, Dallas, TX; Andres Institute of Art, Brookline, NH.



ARE DOG. Oil on canvas. 18" x 24"

"I love color, texture, paint, form, composition, designing, serendipity, a well-told story, and a good joke. Are Dog is a response to my interest in incorporating modern symbols and letters into compositions as a sort of hieroglyphic, for a supposed perplexity and depth of meaning."

Venues: Artist Open Studios, Blue Shutter Gallery.



INTERLUDE. Acrylic, mixed media. 24" x 24"

"The images evolve from color and textures, following their lead as it comes to life. Inspiration comes from interaction with nature and travels to other lands and cultures." Venues: Benfield Gallery, Severna Park, MD; Mystic Outdoor Art Festival; Working Artists Forum, Easton, MD.



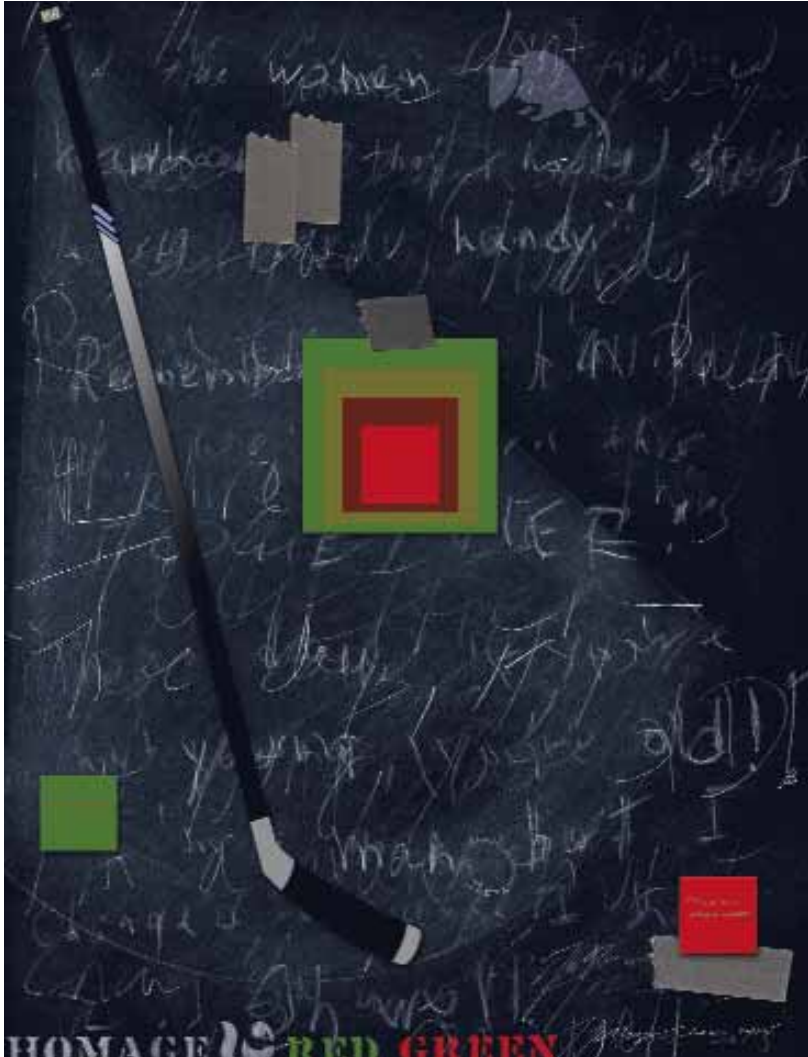
ALMOST REAL. Acrylic, wood, found objects. 60" x 40" x 6"

"After many years as an illustrator, I continue to be enthralled by the figure and the implied narrative. I am drawn to portraits that fall outside the norm. In my latest work, which makes use of mixed media and assemblage, the story becomes more mysterious, even with the presence of more suggestive details."



LIZZY AND JUPITER. Acrylic on panel. 40" x 22"

"My work is predominately figurative. Painting primarily with palette knife, each work starts with a heavy, abstract underpainting upon which seemingly simple figures take on surprising depth and a rich complexity." Venues: Foundry Gallery, Washington, DC; Alexandria Art League Gallery, Alexandria, VA.



HOMAGE TO RED GREEN. Mixed media on Sintra. 40" x 30"

"Since the mid 1970s, I have focused on the nature of illusion and reality and addressed issues such as politics, philosophy, and science. The work illustrated here is one in a series that honors the performing arts." Venues: Studio 26 Gallery, New York, NY; Art4business, Philadelphia, PA; News Journal Center, Daytona Beach, FL.



THREE PEONIES. Watercolor. 26" x 35"

"I love the fluid and luminous nature of watercolor and the brilliance of the colors. It was just the perfect medium to paint these beautiful peonies." Venues: Marin Open Studios, Marin Society of Artists.



CONFERENCE OF THE BIRDS, NR. 53. Oil on canvas. 40" x 40"

"My work is process-based and improvisational, straddling the nebulous realm between the mystical and the mysterious and thus the spiritual. A personal journey of exploration through the alchemy of paint, color, light, texture, and the poetics of space." Venues: Vorres Gallery, San Francisco, CA; MiM Gallery, Los Angeles, CA.



COTTONTAIL RABBIT. 9.5" x 4.5" x 4"

"I am known for distinctive, whimsical depictions of animals. My love of wildlife and ability to bestow human-like qualities on them in bronze interpretations has been the basis of my career. I am currently completing a large project—forty-four animal sculptures for the Lucile Packard Children's Hospital Stanford expansion in Palo Alto, CA. Venues: Ella Carothers Dunnegan Gallery of Art, Bolivar, MO; Jerry Ivey Park, Salina, KS; Museum of Science and Industry, Tampa, FL.



ADAM, EVE, AND HOMO SAPIENS. Oil on linen. 24" x 24"

"The whys and hows of making art remain elusive!"



FLOWERING. Oil on canvas, mounted on panel. 36" x 36"

"Everything in the atmosphere pulsates with life, on the verge of movement and change. My paintings are about the forces of energy that surround us, even in something so quiet as a flower unfolding." Venues: Stephanie Breitbard Fine Arts, Marin Open Studios, Sausalito ICB.



TOASTER PIGGIES. Scratchboard, water color. 20" x 16"

"I discovered design through line and scratchboard became a medium of choice when exploring some of the images that appear on my doorstep."



FAR FLUNG LOCALES. Acrylic, collage on canvas. 40" x 30"

"Within my work, I employ fabric, paper collage, and monotypes. I use these materials to explore themes of landscape, travel, and memory. My work is a study in color and texture that leads the viewer to contemplate environment." Venues: Moberg Gallery, Des Moines, IA; Pierogi Gallery, Brooklyn, NY.



BAMBOO ROUNDELL. Photography. 36" x 36"

"The bamboo leaves are glazed with rain dripping through the canopy. Rivulets course down the stalks, pooling at the joints and then spilling over into a fresh stream below. This is my photography, inspired by ancient Irish illuminations." Venue: The American Art Company, Tacoma, WA.



THE RACE. Mixed media. 23" x 16" x 6"

"This piece is almost exclusively made from discarded/re-purposed materials: electric toothbrush rings and other things with holes in them, sequins, broken jewelry, fabric, yarn, a worn out sock, rags, acrylic paint, thread, and a simple looping stitch." Venues:
Portsmouth Museum, Portsmouth, VA; CCBC, Dundalk, MD.



DREAM EVA. Kiln-fired paints on slumped glass, lampworked glass, metal, wood. 33" x 44" x 4"

"I work in glass, metal and mixed media, which opens to me a complex expression of simple ideas. For me the physical qualities of glass capture the ephemeral side of all that is born, develops, and dies in a state of constant movement. It can be formed, transformed, shattered, and crumbled into a thousand pieces. What material could be a better metaphor for life and its transitory nature?" Venue: William and Joseph Gallery, Santa Fe, NM.



MOON GARDEN WITH BLUE. Mixed media on wood. 48" x 48"

"This piece belongs to my newest series, called *Moon Gardens*, where I use paper as paint."

Venues: SFMOMA Artists Gallery, San Francisco, CA; Julie Nester Gallery, Park City, UT; Butters Gallery, Portland, OR.



CARNIVAL BRACELET. Fine jewelry. 7.5" x .75" x .65"

"Color and composition are important parts of my jewelry. Gemstones are hand chosen for a carefully choreographed arrangement. Gold is rollerprinted, formed, constructed, and soldered together, creating a total piece, designed to be a balance of beauty and wearable art."

Venues: Celebration of Fine Art, Scottsdale, AZ; La Quinta Arts Festival, La Quinta, CA;
Sausalito Art Festival, Sausalito, CA.



FIRST LIGHT. Oil, acrylic on canvas. 36" x 24"

"My current paintings are acrylic and oil paint on canvas with multiple layers of glazing to create the depth and movement. I wish my characters and the environment they live in to come alive."

Venues: Michael Levy Gallery, Long Beach, CA; La Quinta Arts Festival, La Quinta, CA;
Celebration of Fine Art, Scottsdale, AZ.



LIVE IN THE LIGHT III - JOY. Acrylic on vellum. 20" x 16"

"All of my visual works describe the myriad ways the spiritual and aesthetic intersect. My creations are attempts to convey spiritual insights using visual form. My hope is that they will entice you to contemplate the ways that Spirit permeates our world."

Venue: Warehouse 416, Oakland, CA.



ROLLING (NGCV #026). Photography, cliché-verre, edition ten. 16" x 20"

"I devoted my career to understanding and mastering the challenging techniques of early photography, but also promoting new processes such as the chemogram (1980) and an experimental process I discovered in the late nineteen-seventies using cliché-verre."

Venue: Nevada Museum of Art, Reno, NV.



WALK IN THE LIGHT - ISAIAH 2:5. Oil. 30" x 40"

"My journey of joy reflects my belief in the creative spirit within each human being.
My paintings invite you to join me on this path in our wondrous world." Venue:
River Art Gallery and Gifts, North Tonawanda, NY.



FADE TO BLUE. Oil on canvas. 30" x 40"

"Though I create drawings and paintings of a number of subjects that are close to my heart, one of my favorites is my native California. I look forward to expanding on this theme in the coming years." Venues: Alameda Art Association Gallery; ProArts Open Studios, Alameda, CA.



POLYCHROMATIC 14. Acrylic on canvas. 33" x 38"

"A pictorial idea does not have to be circumscribed by a square, rectangle, or circular framework. In my art I expand the initial pictorial idea by joining different-sized canvases, which creates a continuity of form and color." Venues: Scottsdale Community College, juried shows in Phoenix metro area.



BLUE SHINGLE. Oil, found object on panel. 38" x 48"

"I begin painting, concentrating on color, form, and emerging patterns, allowing the artwork to lead the way. Inspirations or ideas will emerge, but often not until the work is finished do I understand my plan." Venues: Lireille Gallery, Oakland, CA; Getglobalart.com.



LIVING NEAR THE ROCK. Oil, mixed media on canvas. 42" x 42"

"In my current body of work, I use texture and layers to stimulate the visual and tactile senses. Through various applications, I build layer upon layer: oil, acrylic, objects, canvas, paper... constructing, destructing, brushing, scraping, sculpting...all working together to provide a harmonious visual experience for the viewer." Venues: Closer to the Sun Gallery of Fine Art; Juried art shows and festivals around the US.



GENESIS YELLOW. Acrylic, metallic, dry pigments. 39" x 126"

"My paintings share a vision of the rational and representational, but also unseen and unspoken spiritual spaces of the creation. The colors in these works evoke synesthetic association in the viewer. If one remains quiet with the paintings, it is possible to sense a kind of silent music."

Venues: North Bank Artists Gallery, Vancouver, WA; Above & Below Art Studio, Vancouver, WA;
Lower Columbia College, Longview, WA.



SIDESHOW TIRE MARKS. Photograph. 8" x 16"

"I appreciate the solace of order amid chaos. I create images with intention, considering lines, shapes, and symmetry as seen in everyday natural environments. I often juxtapose images in diptych and triptych to explore themes, rhythms, and relationships of lines. Living with mental illness has me grasping for order, despite the primal urge for chaos." Venues: Norton Factory Studios, Oakland, CA; McGuire Real Estate Gallery, Berkeley, CA.



COLLISION II. Acrylic. 8" x 8"

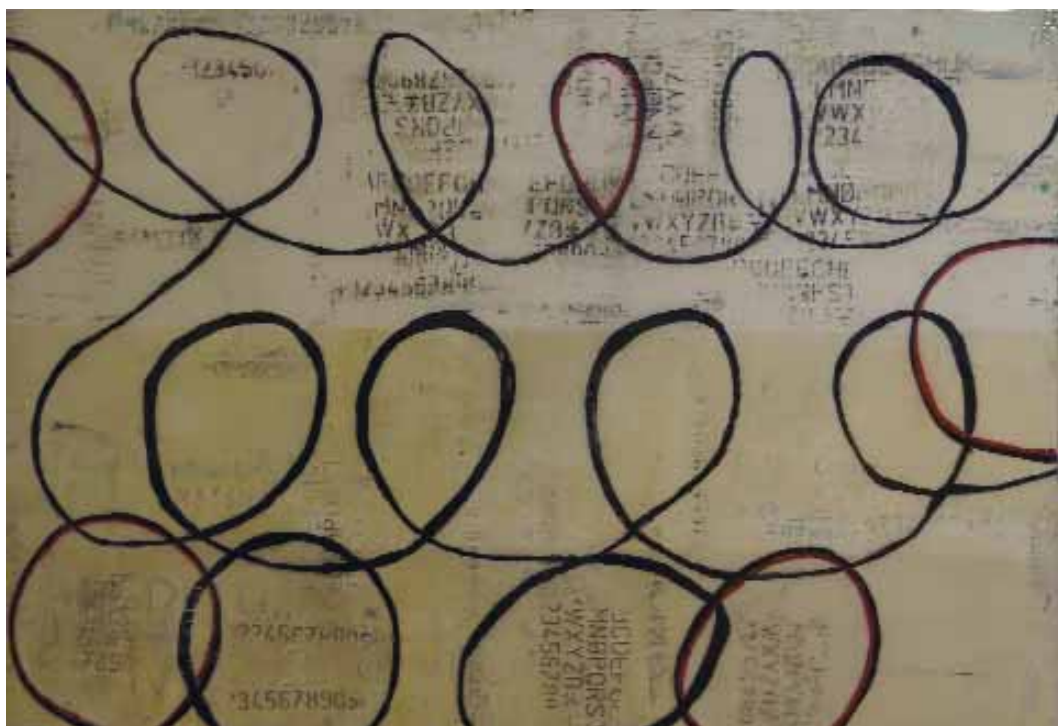
"I believe that there are places where man cannot compete with nature, except, perhaps, in an ultimate individual abstraction. My work explores the inner dialogue between the human and spiritual. Each painting is a separate universe that a person can live in and gain their own distinctive value from." Venues: Villa Spankadellik, Napa Valley, CA; The Gagliardi Gallery, London, UK.



POTUS 14. Encaustic. 14" x 14"

"My journey of discovery has finally taken me from abstract colors to images. I created the image on wax paper, photographed, and transferred it onto wax. My goal was to interpret reality with an energetic, creative, fresco perspective that aligns with abstract ideology."

Venues: Cantor, Stanford University, Stanford, CA; Pacific Art League, Palo Alto, CA;
Joyce Gordon Gallery, Oakland, CA.



CONNECTED. Mixed media, acrylic on wood. 45" x 65"

"I transfer raw emotion to canvas. Each piece encompasses the complexities of human emotion and transforms in layers, thereby creating, hiding, and then revealing. My drive to paint is innate and connected to my love of design, architecture, texture, and color." Venues: Heath Gallery, Palm Springs, CA; Terra Firma Gallery, Sonoma, CA; Slate Gallery, Oakland, CA.



SURGE. Acrylic ink on canvas. 72" x 60"

"I paint without brushes. I use only a glass dropper from a jar of acrylic ink. This catch and release that happens across canvas mirrors the flexibility required of us in life. Go with the flow, or in this case, it's more of a spill where honesty reveals itself." Venues: Revelry Boutique Gallery, Louisville, KY; Copper Moon Gallery, New Albany, IN.



CHESS TWO. Porcelain. 24" x 24" x 2"

"My porcelain pieces are stamped and patched with symbols of ancient worship, pressings from sacred and secular texts, Gallo-Roman and medieval symbols, the hands, faces, and feet of Renaissance royalty, Viking warriors, and monks. These tailings become the words in the stories my pieces tell—connecting me to the makers of the original."

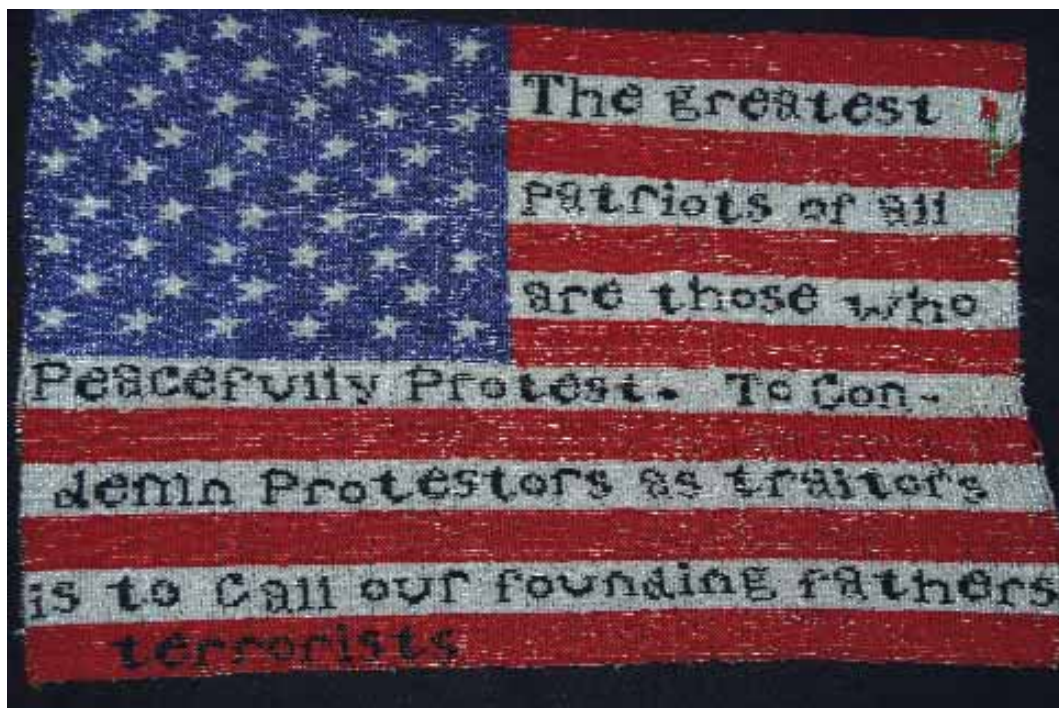
Venues: Museo Gallery, Langley, WA; Whatcom Museum Shop, Bellingham, WA.



COSTA RICA BREAKFAST. Oil on canvas. 16" x 20"

"I strive for energy in the subject matter and each brush stroke. I prefer vibrant, expressive colors and thick paint to create a tactile and emotional response from the viewer. 'Get in and get out' philosophy keeps my paintings fresh and spontaneous. This is not your grandmother's still life."

Venues: Venteux Vineyards, Templeton, CA; The Alameda Artworks, San Jose, CA.



AMERICAN STATEMENT. Bead weaving. 18" x 24"

"Bead weaving is an ancient Native American technique. I create my own pattern using my poetry and paintings. I like to create something beautiful and unique." Venues: Nelson Atkins Museum gift shop, Kansas City, MO; Etsy.com; Fineartamerica.com.



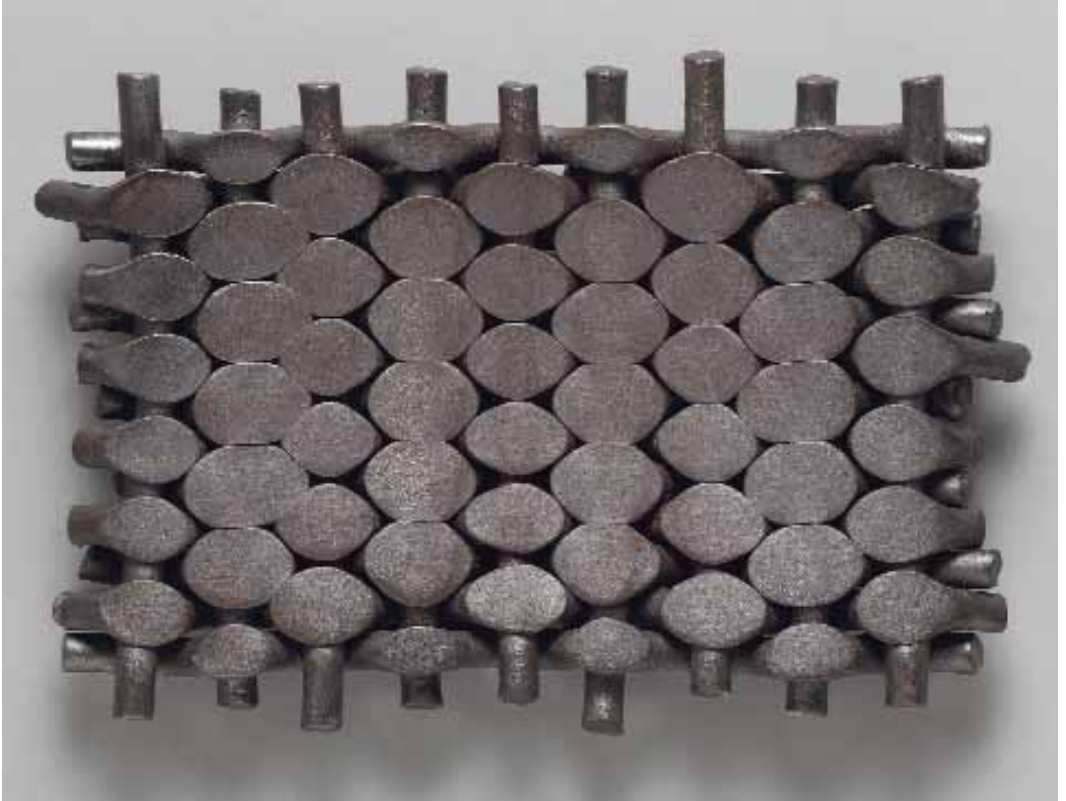
TIGER DRUM. Encaustic, mixed media. 36" x 36"

"I love color, form, and the heat of encaustic. These elements ignite my senses and bring forth a type of construction that is intuitive and reflective of my environment. Nature is my essential teacher, and the natural environment my best learning environment, whether in my native California or in Brazil, where I travel yearly." Venue: Collector Art Shop, Berkeley, CA.



MANDALA. 14k pin/pendant. Glenn Lehrer Torus Ring center. 3" x 3"

"My hand-woven jewelry collections are mosaics of creative expression. By applying fiber techniques to gold using the simplicity of primary shapes, these woven sculptures reveal their fluidity and depth as seen in the geometry of nature. These unique pieces evoke dream catchers, kaleidoscopes, and contemporary filigree." Venues: Waverly House Gifts & Gallery, Springfield, MO; TheArtfulHome.com; The Jeweler's Workbench, Waynesville, NC.



WOVEN PLATE. Stoneware clay. 11" x 16" x 2.5"

"As a ceramic artist who has woven baskets and textiles with traditional materials, I am intrigued by their textures and patterns. My woven stoneware plates are an adaptation of the simplest of weaving techniques. It is a challenge to work the clay in an unconventional way and transform it into unique woven patterns. This plate was fired in a wood kiln, which enhances the color and texture." Venues: Grand Hand, St. Paul, MN; Freehand, Los Angeles, CA; AMOCA, Pomona, CA.



SPIRIT RING. Rust paint on mixed wood. 48" x 36" x 6"

"When creating my wood sculptures, I use natural materials, creating an object based on organic shapes in nature. The various textures, shapes, and negative space hide nothing, but bring out an exceptional quality of this old yet contemporary material." Venues: Torpedo Factory Art Center, Alexandria, VA; Annmarie Sculpture Garden, Solomons Island, MD; Designers Two, St. Leonard, MD.



BETWEEN EARTH AND SKY. Mixed media. 31" x 24"

"I attempt to express in purely visual terms images which are not simply visual happenings, but which are experiences throughout my life. My composition is that of dark and light, warm and cool, color, mass and line, submitting to an aesthetically pleasing piece."

Venues: Torpedo Factory Art Center, Alexandria, VA; Annmarie Garden & Sculpture Center, Dowell, MD; Designers Two Gallery, St. Leonard, MD.



BALLAST & BUOYANCY. Quilted batik, embroidery, acrylic. 36" x 24"

"What you source from is the key to understanding pain. I found old anchors dragging, embedded in the depths of my subconscious, with presence of breath only to keep afloat. I let them go, forgive, even though that is painful, too." Venue: The Third Friday Gallery, Oak Park, IL.



THE CHICKEN OR THE EGG. Acrylic on canvas. 40" x 40"

"I appreciate how abstract expressionism creates an experience with an emphasis on spontaneity and implication, and involves more mystery than obvious description. I enjoy engaging the subconscious and leaving my audience with something to think about."

Venue: Napa Valley Open Studios.



WINTER GLORY. Oil. 40" x 30"

"Some moments so astound me in their beauty and power that it takes my breath away, and I actually feel compelled to applaud. Here, I tried to capture a single, fleeting moment in time with quickly changing light and cloud movement over Hanalei Bay. By painting this large, I wish to share my excitement, and hope that others will be inspired to stay in the realm of possibilities." Venues: Gallery One, Petaluma, CA; Dolphin Gallery, Gualala, CA.



HORSEHEAD NEBULA. Acrylic on canvas. 50" x 30"

"My abstract paintings are based on photos from the Hubble Space Telescope, reflecting my fascination with time and space. Looking at these images is like looking back in time."

Venues: North Bank Artists, Vancouver, WA; Clark County Open Studios, Clark County, WA.



MORNING. Oil on canvas. 30" x 24"

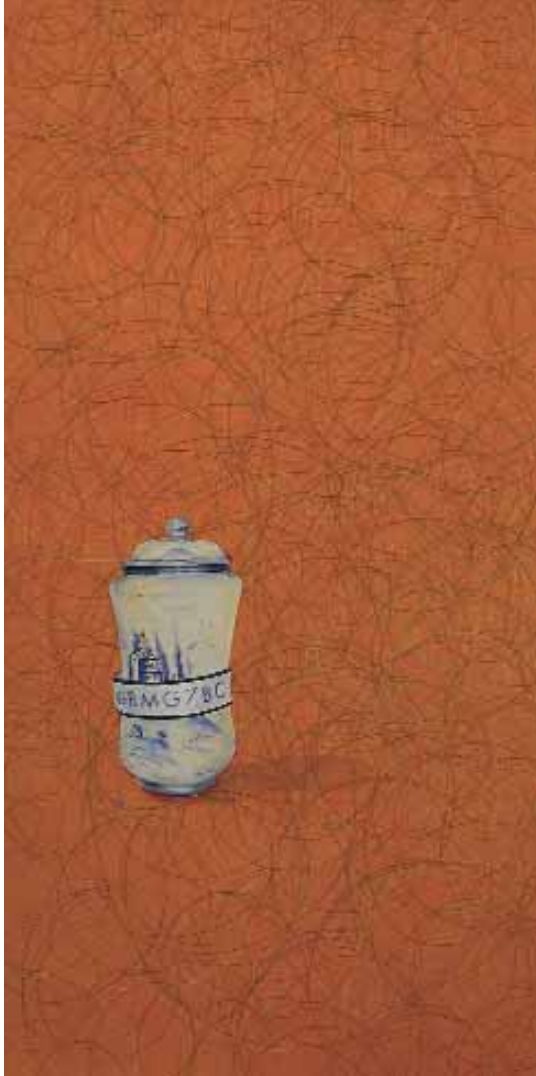
"As I painted this on Easter morning, I imagined loved ones who have 'gone on' ahead of me, somehow still watching and cheering me on. Golden sun warming my shoulders, red tulips shouting, 'Paint the garden house today!'" Venues: Chasen Gallery, Richmond, VA; Carlton Gallery, Banner Elk, NC; Bonfoey, Cleveland, OH.



VALENTINE'S DAY MASSACRE. Acrylic. 44" x 66"

"Angles and shapes compose the heart of a city landscape in paint. There is a tug of war between all the shapes and angles drawing on my feelings of injustice in the world at large."

Venues: 4th Street Fine Art, Berkeley, CA; Mo'z Cafe, San Francisco, CA; Aunt Mary's Cafe, Oakland, CA.



VASETAG. Oil on canvas. 96" x 48"

"My current work is based on a recollection used to build the interlocking elements of all the work. Each piece utilizes disparate images isolated on the common field, paying great importance to their preciousness and relevance to the past, present, and dreamt."

Venue: Modified Arts, Phoenix, AZ.



CREATURES. Acrylic. 30" x 22"

"I paint because it brings me joy. I want my paintings to bring that joy to others. Using a transparent acrylic layering process, my work has many textures and depth of color. My subjects vary widely." Venues: Foothills Art Center, Golden, CO; The Evergreen Gallery, Evergreen, CO; Red Mountain Art Company, Lyons, CO.



FLUTTER. Oil on canvas. 36" x 48"

"I enjoy painting in oil because of the creamy feel and rich color. Impressions and hues bring the images to life. It is magic seeing the story appear on the canvas." Venue: Marin Museum of Contemporary Art, Novato, CA.



THE TEAM. Wood. 81" x 135" x 34"

"Carving tactile forms out of wood, we strive to retain realism in our work. Enhancing the movement of this horse and rider by utilizing the wood grain within was key to the balance of beauty in this piece."



THE AMAZON QUEEN. Ceramic, acrylic, Amazonian artifacts. 22" x 26" x 13"

"Honoring all Indigenous Peoples, *The Amazon Queen* is adorned with feathers, seeds, and porcupine quills from the Amazon. Her Majestic Nature reflects the power of the Amazonian way of being. May it flourish forever. Viva! Amazonia Viva!" Sacred Visions Studio, Berkeley CA; Marin Society of Artists, Marin CA; Open Studios, Berkeley, CA.



SAUSALITO GRAYS. Acrylic. 24" x 18"

"Phrasing: mixing observation, memory, and intuition with the elements of the figure. Thinking of what's human, what's heart, what's time." Venue: ICB Building, Studio 106, Sausalito, CA.



BLUE MOUNTAINS OF ZONE 2 (ICELAND). Mixed media on canvas. 5" x 3.5"

"I am intrigued conceptually that all that exists is created by the same elements. We are all interchangeable depending on one's perspective. When ideas and elements are rearranged, new realities and truths can be created. I work with the idea that colors, shapes, and symbols become abstracted when switched around." Venues: Ramon's Tailor, Market Hall Artists, Slate Art.



VISIONS OF MY WORLD. Ceramic, fused art/dichroic glass. 37" x 37" x 1.5"

"At varying stages of my life my focus on the beauty of nature led me to explore the sky and ocean. I now use these images for my art. This work consists of nine hand-made ceramic plates with art glass and dichroic glass. The ceramic pieces are first glazed and then re-fired at lower temperatures to fuse the glass to the already glazed ceramic." Photograph by Mark Tuschman.

Venues: Stanford Medical Center, Vi of Palo Alto, Leslie Ceramics.



LAND ELEMENT, CONNECTED. Collaged acrylic on Yupo. 55" x 41"

"My art is about me, of course. It reflects the scale of me and my ability to create. My art is about possibilities. The ongoing relationship with the mark and color. This self-reference and the multi-layering reflect the tensions and struggles of my life. It is the constant search for possibilities in life and with my work." Venues: Studio 332, The Torpedo Factory, Alexandria, VA; Water Street Gallery, Douglas, MI; Louisa Gould Gallery, Martha's Vineyard, MA.



FLOWERBURST. Fused, bent, airbrushed glass. 30" x 30" x 4"

"I have worked with glass for over fifty years, most recently re-used or recycled. I like to infuse glass with beauty, stillness, and wonder. I've had over 165 commissions in corporate, institutional, public, and residential spaces."



CELESTIAL 5. Acrylic. 30" x 22"

"Non-objective painting allows total abandonment. You have nothing to follow but you have to make it work. For me it's a passion, and each time I approach a new painting it's just as thrilling as the first time." Venues: The Wit Gallery, Lenox, MA; Gallery 14, Vero Beach, FL; Gallery 37, Milford, DE.



CALIFORNIA BOUND. Oil on canvas. 62" x 76"

"*California Bound* is one of four large paintings which are installed in a private home near San Francisco. I carefully researched this painting for accuracy, and it shows a 'clipper' of the era just after the California Gold Rush."



GRAVITY I. Oil on canvas. 18" x 36"

"I am a writer and a painter. I write blogs on my website and I paint storytelling. This piece represents the arc of life, symbolizing the dynamic dilemma between intuitive play and taught behavior, as shown by beach balls and boxes." Venues: Napa Valley Museum, Saatchi.com, ArtSlant.com.



CHANGING OF THE TABLECLOTH. Oil on canvas. 16" x 12"

"Trained as an illustrator, I am naturally drawn to the narrative, using my work to suggest a story. These works are of unidentifiable but real subjects, and they are meant to be accessible to anyone's imagination. My process moves from recording a specific moment, a specific place, to transforming it into a fictional scene." Venues: Waterhouse Gallery, Santa Barbara, CA; New Masters Gallery, Carmel, CA; Lee Youngman Gallery, Calistoga, CA.



MARS ATTACKS-RAY GUN. Oil on canvas. 45" x 60"

"I am interested in exploring popular American cultural stereotypes, icons, images, slogans, advertisements, and the exploitation of the general public by the mass media. I juxtapose these disparate images as a way to give new meaning to recognizable icons."



MORNING REFLECTIONS, PINE CREEK. Oil on linen. 30" x 30"

"I look at relationships between big value shapes and their proportions, and try to find a visual pattern in them, with the goal of having a solid, abstract design underneath the painting. How I put the paint down is my response either to the subject matter, the materials used, how I'm feeling, or the visual approach used to explore the painting." Venues: Evergreen Fine Art, Evergreen, CO; Oh Be Joyful Gallery, Crested Butte/Telluride, CO; Mary Williams Fine Art, Boulder, CO.



TREES ON MONHEGAN ISLAND. Oil on canvas. 36" x 36"

"Painting outdoors is a great experience. Creating space yet allowing the paint to have its own voice is always a challenge. Every painting excursion has its own rewards."

Venues: Liman Studio Gallery, Palm Beach, FL; Armory Art Center, West Palm Beach, FL.



EARTHBOUND. Woodcut print with *chine-collé* on toned paper. 24" x 16"

"The direct marks of the cuts, along with the character of the individual piece of wood, have a unique strength of their own. I aim to use that strength to enhance imagery that hopefully resonates with others." Venue: Ward 8, Evanston, IL.



THE SHORE OF SHAMBALA. Acrylic on birch. 26" x 40"

"At the edge of life lives a reflection, beyond the obvious, there, standing, ever present, the true self, looking back at us as if in a mirror. The face that constantly appears is seeking our acceptance, and by seeing ourselves in all that is, a key is given that opens a door to the home of humanity, and once inside, there you will find the unity of your being and the love of your life."



RED CANYON. Oil on canvas. 30" x 30"

"What is it that makes art compelling? It is an ever-growing understanding of the space, the light, the textures, and the tactility of the scene, the ongoing change that's inherent to the subject, and a sense that there's more under the surface. I find my balance by experimenting with transplanted traditions, both modern and ancient, combined into singular works of art."

Venue: Sagi Art Studio, Sunnyvale, CA.



YELLOWSTONE PHOON. Photography. 20" x 30"

"Light, color, nature, the unique moment; these are the elements that send me out into the world with my camera to capture and share images with you." Venues: Blackhawk Gallery, Danville, CA; Center For Anti-Aging, Danville, CA; Bagel Street Cafe, Alamo, CA.



FINNY FISH. Natural mixed fiber, coconut pod, plant stems. 15" x 42" x 14"

"I'm an experimental artist creating sculptural forms out of organic materials, such as barks, palms, coconut pods, banana leaves, bamboo shields, and shells. The materials suggest an idea, they tell me their stories. I capture them in the form the materials suggest."

Venues: Vault Gallery, Cambria, CA; Marin Museum of Contemporary Art, Novato, CA;
Thelen Studio/Gallery, San Rafael, CA.



A DAY ON CAPTIVA. Oil on black gesso panel board. 9" x 12"

"My oil paintings are the whispers of the sea, the sand on my feet, and the boundless blue skies. My endless inspiration comes from walking the pristine, sandy white beaches, each with a story to be told." Venue: 2 Islands Gallery, Captiva Island, FL.



POWER OF CUBA: FLAMENCO. Digital mixed media. 30" x 24"

"I am a digital alchemist exploring identity issues, chance as an element in art, and the Dada concept of collage on a digital level using my photography, digital painting, and found imagery. New meaning comes from combining different imagery." Venue: Running With Scissors, Portland, ME.



AUDUBON GRID SERIES. Handmade paper, mixed media. 33" x 45" x 2.5"

"I describe my work (handmade paper assemblages) as paperstries. Layered and textured with pure Japanese aesthetics, the assemblages assimilate various cultural histories. The process includes drawing and glazing on copper and gold leaf. Ranging from one to six feet, the pieces are hand-dyed and laminated onto fiberglass screens, permitting the interplay of space, light, and fiber." Venues: Elektra Gallerie, Sausalito Art Festival, Baulines Craft Guild.



THE WAITING ROOM. Oil. 40" x 30"

"I see my work as a continuing celebration and exploration of the infinite variety and complexity of human beings on our shared journey. I am driven to capture their elegance, humor, fragility, absurdity, vulnerability, their attitude, spirit, energy, and life force."



CIRCULAR DUOLITH GROUP. Foam, plaster. 36" x 64" x 48"

"I explore different series simultaneously. This keeps me fresh. I seek to expose mysteries, study the intellect and philosophy, and express the experience of being human."
Venues: Silvermine Art Center, New Canaan, CT; The Copley Society of Art, Boston, MA.



WHEN FLOWERS SING. Acrylic, oil pastel, ink, oil on canvas. 48" x 60"

"I find nothing more challenging than an empty canvas! Working with acrylic and mixed media, I use my fingers, plastic cards, and pallet knives in each creation, a secret of my soul."
Venues: Raiford Gallery, Roswell, GA; Paul Robinson Gallery, Marietta, GA; Metals and Paint, Savannah, GA.



RIVER JOURNEY. Oil on canvas. 36" x 36"

"My atmospheric paintings are based on nature, fashioned from memory and imagination, and imply landscapes not necessarily seen, but felt. I dissolve the landscape, leaving only what I consider to be the essence of nature." Venues: Eminent Design, Sonoma, CA; Robert Allen Fine Art, Sausalito, CA; Ugallery.com.



SOLAR AND LUNAR. Archival digital print. 11" x 15"

"The 'blood moon' of a total lunar eclipse was photographed in a context of architectural solar panels. Both eclipses and solar panels depend on the blocking of sunlight to 'work,' and both can be illuminating." Venues: Arbor Gallery, Merced, CA; New Courthouse, Madera, CA; University of California at Merced.



ENIGMA. Encaustic. 22" x 17"

"As a painter, I am compelled daily by the encaustic medium, with its luminosity and its playful, experimental, seductive qualities. *Enigma* reflects my connection to beauty in nature and to environmental concerns." Venues: Pajaro Valley Arts Council Gallery, Au Midi Gallery and Restaurant, 17th Avenue Open Studios.



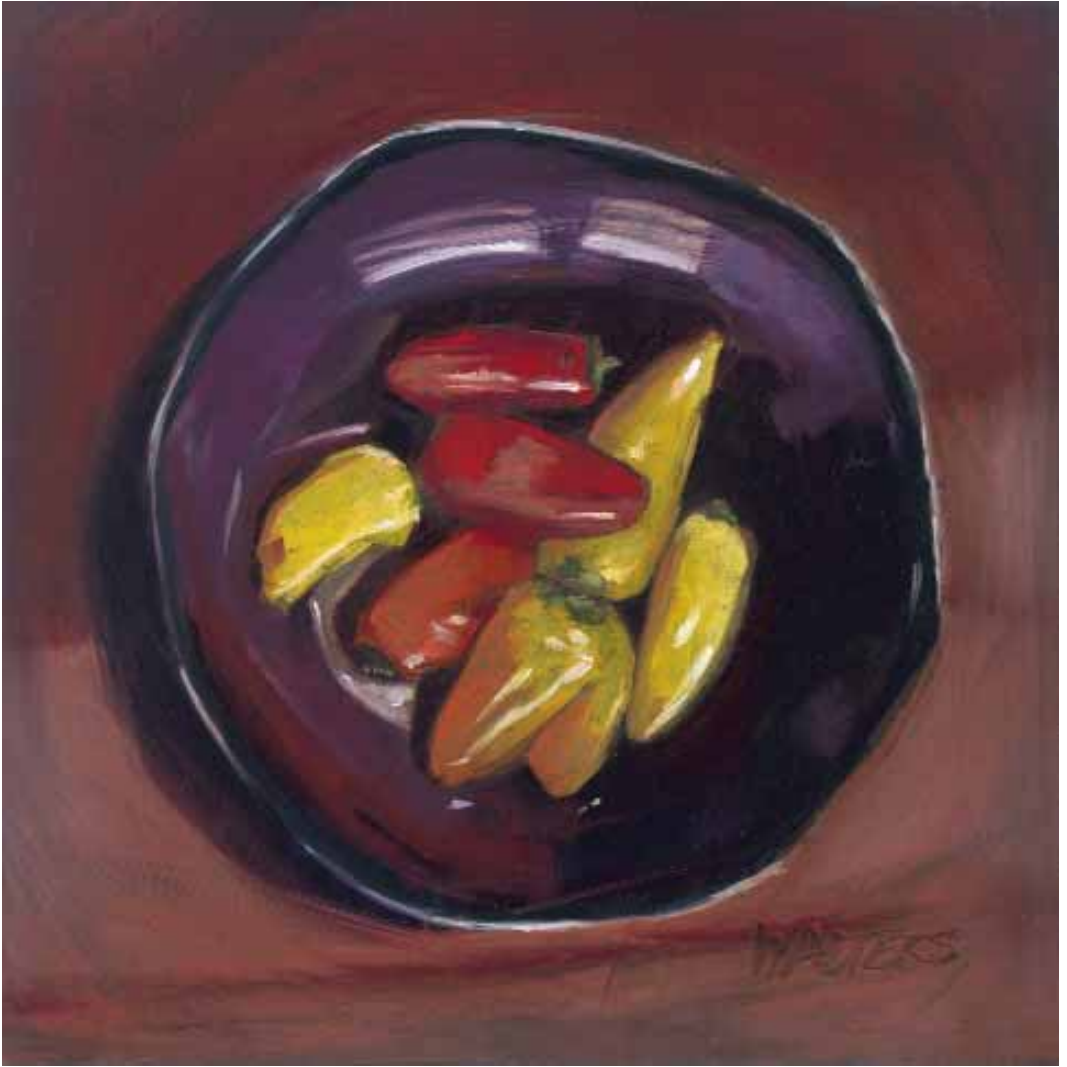
MEASURE. Oil on canvas. 36" x 44"

"My goal is to work with my subjects until they come together in a way that resonates, or creates a dissonance, that generates a particular mood and atmosphere. The figures create their own narrative, with my guidance, and meaning emerges from a viewer's interpretation of that story." Venue: Sonoma County Art Trails.



SPRING THAW. Natural plant root, plywood base-painted. 48" x 24" x 12"

"Most of my current works are created from found recyclable and reusable materials ranging from windshield glass, wood, shovelhead steel, plastics, stone, organic matter, and plant life." Venues: Epcot Center Art in the Garden, Albin Polasek Museum & Sculpture Garden, Lake Eustis Museum of Art.



PEPPERS. Oil on board. 8" x 8"

"Peppers is a seasonal food homage. Still life includes florals to sinks and many subjects in between. Portraits, hard and softscapes, figures, and glimpses of ordinary activities fill out my practice." Venues: Studio Gallery, San Francisco, CA; San Francisco Women Artists Gallery; Desta Gallery, San Anselmo, CA; Epperson Gallery, Crockett, CA.



REAR VIEW MIRROR. Casein on paper. 48" x 37"

"I take my paintings along while kayaking—they get soaked, dissolved, crumpled, torn, sometimes almost destroyed. Later, when dry, they get repainted and repainted as desired. Each painting is a record of its experience with me."



GATHER 03. Monotype print. 30" x 22"

"I want my artwork to have a resonance that can evoke memories and emotions for each viewer. With the printmaking process the window into the subconscious can be pushed open just a bit further. I'm happy when I'm surprised." Venues: NEOrama Studio, Denver, CO; Open Press Gallery, Denver, CO; modmood, Wheat Ridge, CO.



PLAYMATES. Oil on canvas. 24" x 32"

"Emotional moments are my inspiration. In this painting the moment of play between the mother and her daughter celebrates life. Capturing that moment and enhancing it with the interplay of color is a joy." Venue: Hunters Point Shipyard Open Studios, San Francisco, CA.



CESTA LA MORELEJA. Black stoneware ceramic vessel. 15" x 24" x 24"

"This recent body of work is inspired by ancient and contemporary basketry and my interest in Asian architecture. After forty years of using *raku* as my firing method, I have ventured out into the world of black stoneware for this new collection. The simplicity of the non-glazed black clay enhances the beauty of my forms and carved textures." Venues: Gaya Ceramic Art Center, Ubud, Bali, Indonesia; SOFA, Chicago, IL; K. Allen Gallery, Sister Bay, WI.



URBAN LAUNDRY. Digital painting. 24" x 18"

"This painting represents the ebb, flow, rhythm, and beat of the city. The urban life is one of color and continual movement, and surprises of uniqueness in expression, such as someone hanging their laundry out between the high-rise buildings." Venues: Museum of Computer Art, Brooklyn, NY; Charlotte Fine Art Gallery, Charlotte, NC; Haywood Arts Council, Waynesville, NC.



GOLDEN NIGHT AMBER DELIGHT LAMP. Porcelain. 15" x 10"

"Making lampshades is a fun challenge that never gets old. Variables such as thick enough, thin enough, the right amount of glaze, proper size, and a special porcelain that is difficult to throw, keep me on my toes." Venue: Open Studios, first weekend every December.



AZ HARRIS HAWK. Reduction relief print. 11" x 8"

"My primary work revolves around water—oceans and swimming pools have occupied much of my focus. But living in Arizona inspires me in many other ways, ranging from immigration issues to the handsome creatures that inhabit our skies." Venue: Five15 Arts Gallery, Phoenix, AZ.



KORYNNE. Oil on birch. 18" x 24"

"In the past my oil paintings of infants dealt with archetypal Personas. In this new series, *Nieces and Nephews*, I'm working from my own relatives. Korynne made me wonder if we don't chose our parents." Venues: Modern Eden, San Francisco, CA; Santa Ysabel Gallery, Santa Ysabel, CA.



CONVERSATION. Oil on canvas. 48" x 72"

"Still life provides a means to explore composition and color, but also to examine the meaning of home, relationships, scarcity, and abundance. Plates and chairs stand in for family or community members in all their variety, personalities, and relations to one another."
Venues: Lauren Clark Fine Art, Great Barrington, MA; Galerie Reynard, Williamstown, MA.



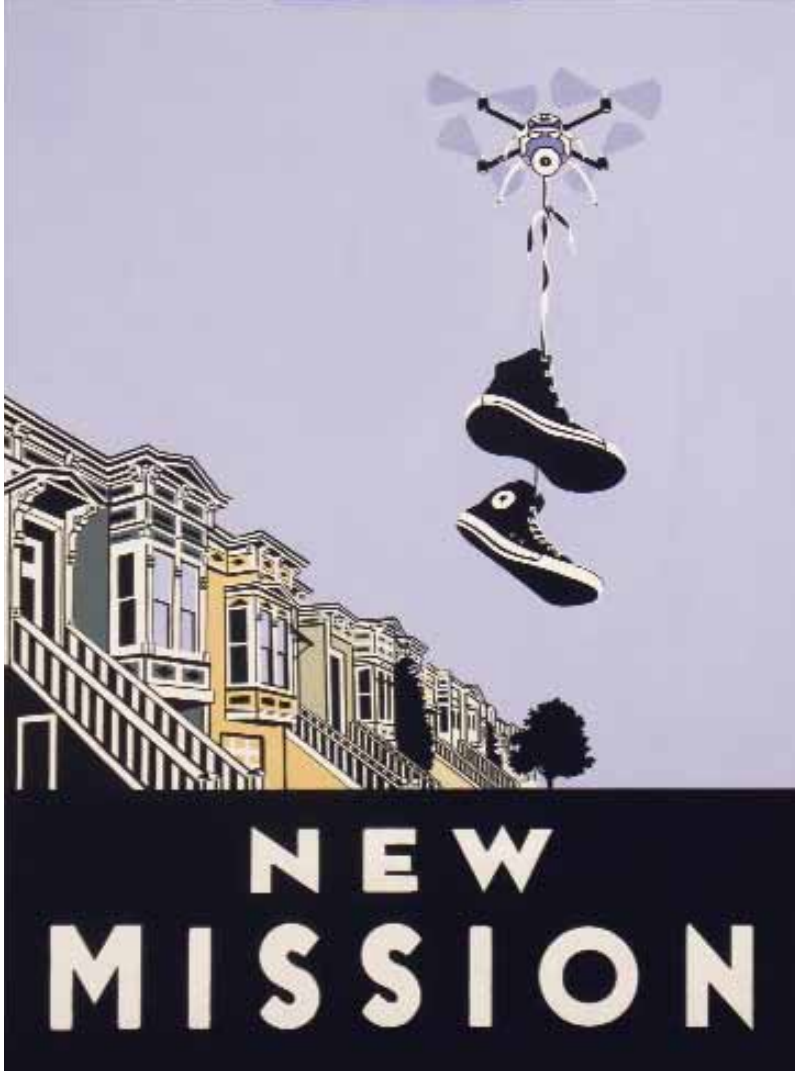
WHOOZIT TEAPOT I. Ceramic. 7.5" x 12" x 5.5"

"Teapots with personality: low-fire ceramic of red clay with multiple layers of underglaze cut back to reveal underlying colors. Glazed and fired to cone 05." Venues: ACCI Gallery, Berkeley, CA; Marin Open Studios, San Rafael, CA.



BLUE MYCO. Ceramic. 8" x 14" x 15"

"Touch me. Feel me. Stroke me. My work calls out, 'Run your hands all over and experience what I'm about.' Texture and color are used to add interest to simple, nature-inspired forms. Varying degrees of contrasting textures add depth. Color heightens or diminishes the tactile experience, and also aids in setting the mood." Venue: Ruby's Clay Studio, San Francisco, CA.



DRONE SNEAKERS. Gouache on panel. 27" x 20"

"Art is a language. Painting is my primary language and it is the best way I am able to communicate a story. It matters little if what is portrayed is 'true,' only that the final piece is an extension of myself, my experience, and my unique outlook."



WHITE BIRD. Watercolor. 11" x 15"

"I create art because I am inspired by the beauty of nature. Nature is about the ebb and flow of life, so I feel that watercolor, with its ability to flow freely and create spontaneous shapes and a beautiful blending of colors, is the perfect medium." Venue: Clark County Open Studios.



LETTING GO. Bronze. 30" x 9" x 9"

"I create my sculptures by welding, pounding, and grinding sheet metal and steel rods into three-dimensional sketches. I use angles, planes, and rich textures to express feeling or motion. The originals are then copied in bronze." Venues: CODA Gallery, Palm Desert, CA; Alexandra Stevens Fine Art, Santa Fe, NM; DeanDay Gallery, Houston, TX.



TRANSFORMATIONS. Polychrome-welded, reinforced steel. 32" x 54" x 9"

"Growing up in the 1950's and 60's...cowboys, superheroes, and other comic book personalities not only influenced me, but later inspired me to create them as a personal tribute through my art. Popeye was one such character, being the first powerful vegetarian, who loved and protected his family. Many more such works were created: The Lone Ranger, Wonder Woman, Supeman..."

Venues: Bodega Landmark Studio; Hand Goos, Occidental, CA; Crocker Gifts Gallery.



BARN + SKY. Photograph printed inside a rhea eggshell. 3.5" x 5" x 2.25"

"The biology of life inspires me, while the chemistry enables. Through tactile experimentation, I project and print on the most organic object of our world. The eggshell, though connoted with delicacy, is a durable vessel for encapsulating nature's texture and beauty." Venues: Open Studios, Berkeley, CA; Dimond Mine Arts, Oakland, CA.



REIKI MEDITATION. Mixed media. 48" x 48"

"I use simple shapes and forms variously combined and layered with thickly textured materials to explore geometric relationships and to create bas-relief, sculptural effects. I seek *wabi sabi* materials which have been softened and aged by the earth. The materials were found in my favorite Colorado junkyard. Everything is held together with acrylic mediums." Venues: Montserrat Contemporary Art Gallery, New York, NY; Inner Idea Artists Gallery, La Veta, CO.



IF YOU LOVE ME. Mixed media, metal embossing. 36" x 48"

"I find my own voice in an expressionistic art form by using bold colors and strong brush strokes to express moments in my life, rendering myself to my analytic and emotional mind, to tell my story in a lyrical way without words. I constantly like to explore new techniques and approaches in colors, surface, and design. My emphasis is on composition, lines, movement, and proportion."

Venue: Yoga Breeze, Cave Creek, AZ.



GOLDEN FIELD. Oil. 36" x 36"

"As an artist and geologist, I see the landscape in an unconventional way. I look for the structure in a landscape and then I combine that with expressive color on the canvas."

Venue: Sonoma County Art Trails, Sebastopol, CA.



JAZZIN' WITH MY SWEETIE. Clay, papier-mâché, acrylic. 32" x 27" x 12"

"My love and appreciation for music inspired me to create *Jazzin' With My Sweetie*. I want to convey the joy they feel in playing music and being together."



NOCTURNE. VIOLET. GREEN. (Detail). Mixed media paper assemblage. 53" x 54"

"Nocturne. Violet. Green..." is a continuation of my exploration of color and movement on an endless field." Venue: Gallerie Citi, Burlingame, CA.

ARTIST INDEX

- | | | | |
|----------------------|--------------------|------------------------|---------------------|
| 4.....ADAM | 40.....CAMPBELL | 79.....GALEEVA | 118.....JOHNSTON |
| 5.....ALLEN | 41.....CAPPARELL | 80.....GAMBLE | 119.....JONES |
| 6.....ALLYSUM | 42.....CARROLL | 81.....GARCIA | 120.....JOSON |
| 7.....ALPASLAN | 43.....CARTER | 82.....GILL | 121.....JOYNER |
| 8.....AMBLER | 44.....CATALDO, J. | 83.....GILLESPIE | 122.....KADISH |
| 9.....ANDERSEN, B. | 45.....CATALDO, S. | 84.....GOLDBERG | 123.....KAVANAGH |
| 10.....ANDERSON, M. | 46.....CAVANAUGH | 85.....GOOD, A. | 124.....KILLEN |
| 11.....ANDREINI | 47.....CHEUNG | 86.....GOOD, M. | 125.....KIRTON |
| 12.....ANDREWS | 48.....CLARE | 87.....GRANT | 126.....KISHEL |
| 13.....ARNOLD | 49.....CLARK | 88.....GREENBERG, J. | 127.....KNAPP |
| 14.....ATHANAS | 50.....CLAUSSEN | 89.....GREENBERG, R. | 128.....KOOP |
| 15.....AUDETTE | 51.....CLEMONS | 90.....GRIMM | 129.....KOUSOULAS |
| 16.....AXELSON | 52.....COHN | 91.....HAMAWI | 130.....KOWALSKY |
| 17.....BALCHUNAS | 53.....COLEY | 92.....HAMBOR | 131.....KRIEGER- |
| 18.....BANKS | 54.....COPP | 93.....HARRIS | MCGHEE |
| 19.....BARKER-WILSON | 55.....CORNETT | 94.....HARRISON | 132.....KRIKEN |
| 20.....BARLOW | 56.....COX | 95.....HART | 133.....KUHNE |
| 21.....BARNETT | 57.....CRAMPTON | 96.....HAYNES | 134.....KULLA |
| 22.....BASHA | 58.....CROGHAN | 97.....HAZEL | 135.....LABIANCA |
| 23.....BECK | 59.....CROWLEY | 98.....HECK | 136.....LACY |
| 24.....BEHME | 60.....CRUTCHFIELD | 99.....HELMICK | 137.....LANDUCCI |
| 25.....BELISHOVA | 61.....CULVER | 100.....HERRICK | 138.....LANE |
| 26.....BELKNAP | 62.....DANZIGER | 101.....HEUBEL | 139.....LANGMAR |
| 27.....BELLIA | 63.....DEANE | 102.....HILL | 140.....LATTA |
| 28.....BERNARD | 64.....DEFREECE | 103.....HOEVERS | 141.....LAW |
| 29.....BLAIR | 65.....DEPOLO | 104.....HOGAN | 142.....LAWRENCE |
| 30.....BONNER | 66.....DIXON | 105.....HOMINIUK | 143.....LEFFEL |
| 31.....BRADLEY | 67.....DOILNEY | 106.....HOTES | 144.....LEVIN |
| 32.....BRODER | 68.....DONOHUE | 107.....HOTING | 145.....LEVIT |
| 33.....BROZELL | 69.....DORENFELD | 108.....HOWARD | 146.....LIVADITIS |
| 34.....BUNDEY | 70.....DREYFUSS | 109.....HUDSON | 147.....LOPATIN |
| 35.....BURG & | 71.....DUMAS | 110.....IYLI | 148.....LOVELL |
| CUMMINGS | 72.....E | 111.....JACKSON | 149.....LUBBESMEYER |
| 36.....BURKES | 73.....EDMINSTER | 112.....JAQUA | 150.....LUCAS-HILL |
| 37.....BURLEY | 74.....EGBERT | 113.....JASEN | 151.....MALCOLM |
| 38.....BURNER | 75.....ELLIOTT | 114.....JENSEN, C. | 152.....MANDEL |
| 39.....BURWELL | 76.....EREZ | 115.....JENSEN, K. | 153.....MANUILA |
| | 77.....FARIS | 116.....JOHNSON, DEDE | 154.....MARCHAND |
| | 78.....FIELD | 117.....JOHNSON, DOYLE | 155.....MARCI |

156.....MARK	194.....POSILICO, I.	233.....STARR	272.....ZAIKINE
157.....MARKOFF	195.....POSILICO, L.	234.....STAUB	273.....ZAMBRYSKI-
158.....MARONET	196.....POWELL	235.....STEELE	STACHEL
159.....MARX	197.....PREECE	236.....STOKKEBYE	274.....ZEHRING
160.....MASTRANGELO	198.....PUFFAFF	237.....STRATTON	275.....ZGAINER
161.....MATTHEWS	199.....RABIN	238.....SULLIVAN	276.....ZORICH
162.....MAURER	200.....RAUSCH	239.....SUSIEHYER	277.....ZWANDA
163.....MAXON	201.....REINERTSON	240.....TART	278.....ZWEIG
164.....MCCLELLAN	202.....REITER	241.....TAYLOR, J.	
165.....MCMILLIAN	203.....RELTH	242.....TAYLOR, W.	
166.....MCPHERSON	204.....REMLER	243.....TCHERNOV	
167.....MEEK	205.....RENE	244.....TEICHMAN	
168.....MEEKER	206.....RICHARDSON	245.....THELEN	
169.....MILLS	207.....RICHTER	246.....THOMPSON	
170.....MINTUN	208.....RISSMANN	247.....TRACY	
171.....MLYNEK	209.....RITTER	248.....TUCKER-HODY	
172.....MODERBACHER	210.....ROBERTS	249.....TURNER	
173.....MOORE, B.	211.....ROCK	250.....UHLMAN	
174.....MOORE, J.	212.....ROSE	251.....VAN DER HAAR	
175.....MORAN	213.....SAVERI	252.....VEEDEL	
& BROWN	214.....SCARPA	253.....VINEY	
176.....MORENO	215.....SCHACHTER	254.....WADDELL	
177.....MURAYVEVA	216.....SCHAFFNER, J.	255.....WADE	
178.....MUTTON	217.....SCHAFFNER, J.L.	256.....WALKER	
179.....NADOLSKI	218.....SCHUMAN	257.....WALTERS	
180.....NEWMAN	219.....SEBBELOV	258.....WEBBER	
181.....NIELD	220.....SEBERA	259.....WEIMER	
182.....O'CONNOR	221.....SEYMOUR	260.....WENGER	
183.....ORMISTON	222.....SHAVER	261.....WHARTON	
184.....OSTOVANY	223.....SHAWN	262.....WHYTE	
185.....PARK	224.....SHEA	263.....WILLIAMS	
186.....PASSICOT	225.....SHELTON	264.....WILLIS	
187.....PASTER	226.....SHEPARD	265.....WILSON	
188.....PERKINS	227.....SIMPSON	266.....WISE	
189.....PERLOW	228.....SKEOCH	267.....WOODBURN	
190.....PETRICH	229.....SMELICK	268.....YANOS	
191.....PIERLEONI	230.....SMITH	269.....YBARRA	
192.....PIZZICHILLO	231.....SPIVACK	270.....YORKE	
193.....POLOTO	232.....STAIGER	271.....YOUNG	